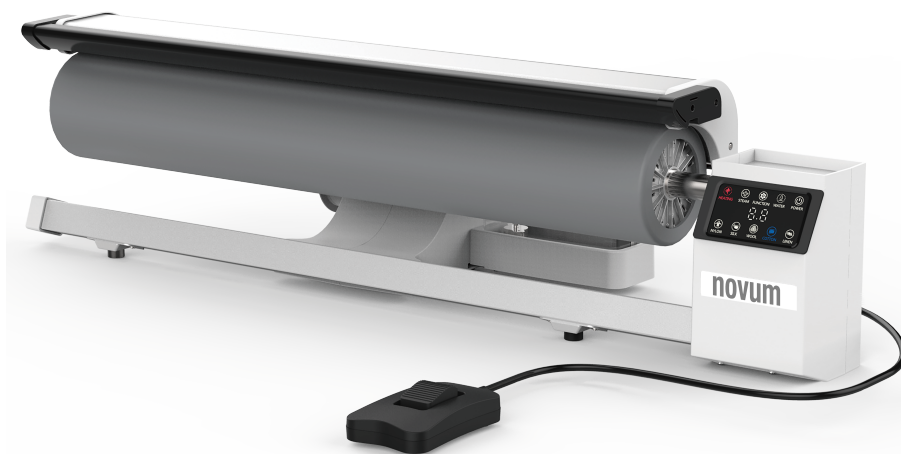


novum

USER MANUAL

Rotary Steam Press

NM5060



KEEP THIS INSTRUCTION MANUAL FOR FUTURE REFERENCE

Respected users:

Thank you very much for buying our products. Our company has been committed to providing customers with the most innovative products and adhered to the most stringent quality control. Your choice and trust will be the spiritual source of our unremitting struggle.

This ironing machine is a professional product designed to carry out multi-purpose ironing of different fabrics such as clothing, sheets, curtains, tableware, etc. You will soon discover that the use of this product will revolutionize your daily ironing work.

By pressing the roller with the ironing plate several times larger than the traditional ironing, the clothing is drove rolling. You just need to put the ironed clothes on the roller, select the right menu, the ironing machine will automatically complete the ironing, which effectively shortening your ironing time by 60%. Automatic ironing greatly lightens your heavy ironing work. Explosive and continuous strong steam can effectively penetrate fabric fibers and provide softer and fluffy effects. It also gives your family a more comfortable dress experience. So efficient and perfect, you will become the star of the whole family.

At the same time, we also consider the security for you. With the control of a built-in microcomputer, the quadruple security mechanism will work effectively without any damage to your clothing even if there is an accidental departure during your use.

Please start your experience. We will be honored to bring more joy to your life.

May all go well with you!


Important Safety Instructions

Please read this manual carefully before using the product and keep it for future reference.

Danger:

- Do not immerse ironing machines in water.
- Do not disassemble and assemble this product without the presence of a professional.

Warning: (To reduce the risk of fire, electrical shock, or other injuries please use this electrical appliances according to the following basic safety precautions.)

- Check that the voltage indicated by the nameplate is consistent with the local voltage before connecting to the power supply of the product.
- If the plug, power cord or product itself is obviously damaged or has fallen, please do not use it again.
- If the supply cord is damaged, the wire must be replaced by the manufacturer or its service department, or by a professional person in order to avoid danger.
- If the product has a large amount of leakage, please contact the dealer repair and do not continue to use.
- The user shall not leave while the product is connected to the power supply.
-  This product is not intended for use by persons (including children) who are physically unsound, sensory or mentally impaired or lack relevant experience and knowledge unless someone responsible for their safety supervises or directs their use of the product.
- It's not a toy! Children should be taken good care of to ensure that they do not play with these products. Especially in the process of use do not let children touch hot plate and pull power cord to avoid scalding and electric shock.
- Do not let power cord touch high temperature pressing plate
- Do not spray steam on the body to avoid scalding.

Note:

- If the product has a ground plug, it must be plugged into a socket with a ground wire.
- Periodically check the power cord for damage.
- The inside of the pressing plate is treated with special treatment. There will be a small amount of light smoke when used for the first time, and after a while it will disappear. This is a normal phenomenon. Please feel free to use it.
- The pressing plate becomes very hot when using this product. If touch hot plate, may cause scald. When ironing and cleaning the pressing plate, close the local power switch and unplug the plug from the power outlet even if you leave the ironing machine for a short period of time.
- Please drain the remaining water in the tank after use.
- Regular cleaning of water tanks.
- Do not put vinegar or other scale remover in water tank; do not use chemical scale remover.
- Please do not pull the plug by pulling the power cord.
- Do not operate another high-power appliance in the same circuit in order to avoid overloading the circuit.
- Be sure to place this product on a solid, flat and horizontal surface.
- Do not erect in the course of use
- This product is limited to home use only.

Technical Parameters

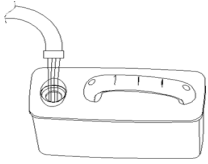
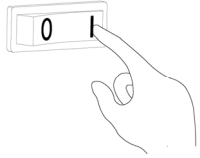
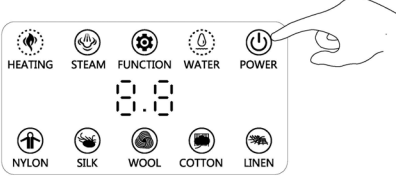



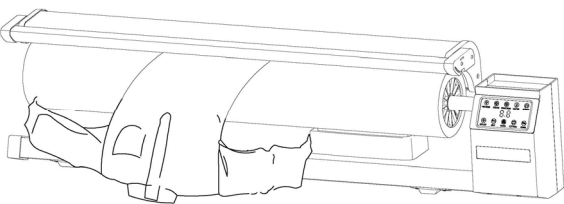
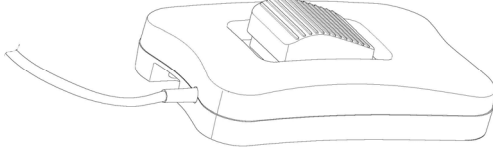
Rated voltage and frequency	220-240V 50/60Hz
Rated power	2200W
Temperature range	85-185°C
Maximum steam volume	40g/min automatic
Features	Steam ironing, Dry ironing
Surface spraying of pressing plate	Aluminum oxidation
Auto sleep	15 Minutes if there is no further action
Power line length	1.8 m
Water tank capacity	2 L
Pressing plate width	36 inch – 91.5 cm
Net weight	20 kg
Gross weight	23 kg
Packing size	1240*370*350 mm

Executive standard:

IEC60335-1:2010+AMD1:2013

IEC60335-2-44:2002+AMD1:2008+AMD2:2011

Quick Guide

	Figure	Steps	Purpose	Remark
1		Fill water to the water tank	Used for makes steam	Maximum 2 L
2		Turn on the power switch	Start power supply	To the position I
3		Power on	Start the touch panel control	Please touch the button 2 seconds
4		Select fabric	Select different ironing temperatures according to the fabric	Temperature from 85-185 °C Total five grade
5		Wait for heating complete	Wait for heating and steam function ready	About 2 minutes
6		Pressure of pressing plate regulation(if needed)	Suitable pressing pressure will better for ironing effect	Refer to chapter II, 2.7
7		Laying clothes on the roller	Ready to start ironing	Suggest to ironing a cloth from the bottom side
8		Press/Move the foot pedal	Controls the pressing plate and the roller to start ironing	Refer to Figure 4

Various Parts Description

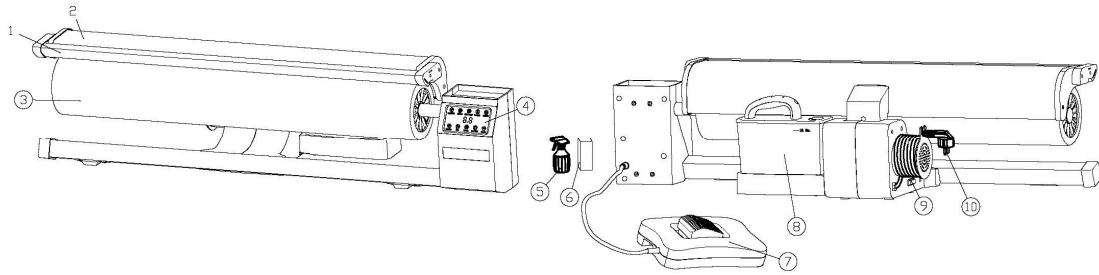


Figure 1

No.	Name	Features	No.	Name	Features
1	Safety bar	Prevent burns	9	Power switch	Cut off /Supply power
2	Pressing plate	Press clothes tightly; produce high temperatures and steam to iron clothes	10	Winding frame	Winding, fixing and storing the power cord
3	Roller	Forward rotation or backward rotation, driving cloths to ironing			
4	Control panel	Touchable function operation panel; Details in Figure 2			
5	Sprayer	Spray the clothes that needs to be pressed			
6	Cushion	Used for ironing sleeves, shoulder, trousers waist part, seams and etc....			
7	Foot pedal	Controls the pressing plate open&close and roller rotation			
8	Water tank	storage water to produces steam			

Control Panel Description

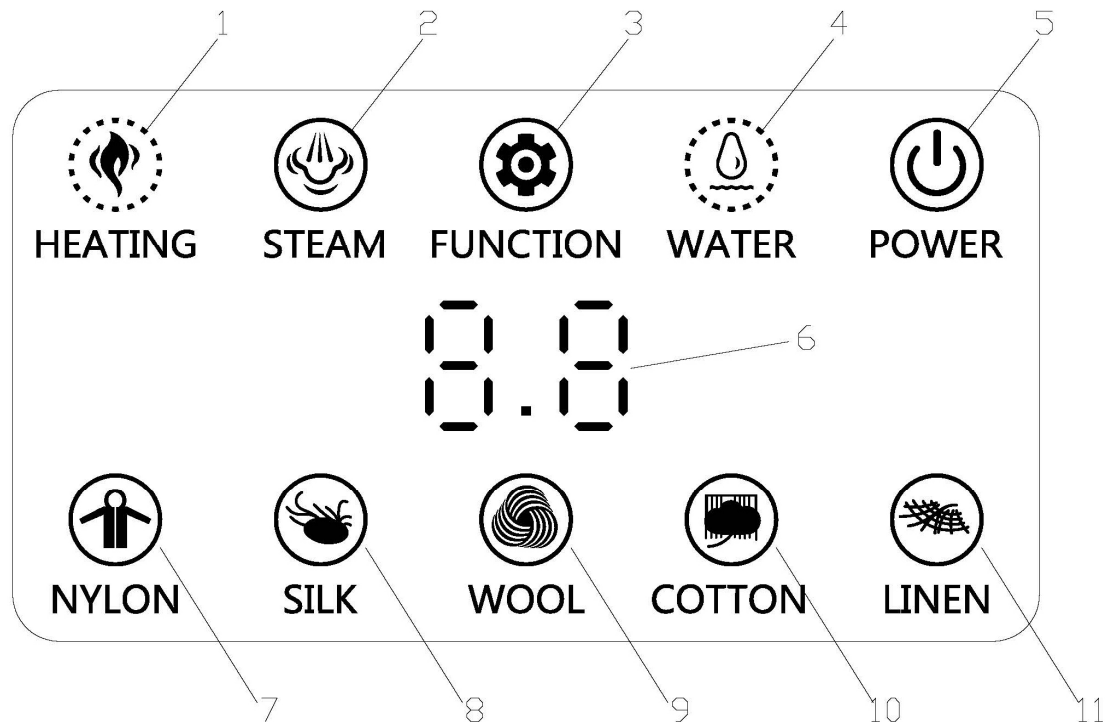


Figure 2

No.	Name	Features	No.	Name	Features
1	Heating	The light indicates that the pressing plate is being heated	8	Silk	Ironing silk fabric
2	Steam selection	Wool, cotton, linen can choose steam function or without steam	9	Wool	Ironing wool fabric
3	Function	Enter pressure adjustment mode	10	Cotton	Ironing cotton fabric
4	Water level	The light is always-on if enough water; Flashing if no water	11	Linen	Ironing linen fabric
5	Power	Power on/off (non-physical power outages)			
6	Number	Indicates the pressing down time			
7	Nylon	Ironing nylon, chemical fiber and other similar fabric			

I. Preparation before use

1.1 Place the product

Choose a place with proper height and smooth surface as the platform for ironing operation and place the product properly and steadily.

Suggest to choose our stand base to support this product.

1.2 Fill water into the water tank

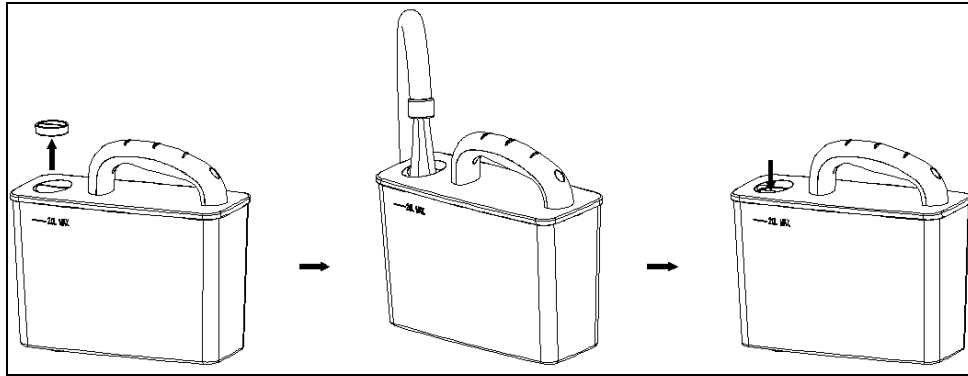


Figure 3

(1) Pull the handle of water tank and take it out of the pedestal. Open the filler cap of water tank and fill water to the water level of MAX (about 2 L) as shown outside the water tank. Cover the filler cap properly (as illustrated in the Figure 3).

(2) Put the water tank back to the pedestal. It should be guaranteed that the water tank is installed properly so that the water level detection will not be influenced and the steam function could work properly.

Notes: The water level must not exceed the level of MAX 2L

Don't put perfume, vinegar, starch or other chemicals into the water tank;

If the hardness of tap water in your region is relatively high, it is suggested to mix tap water and distilled water in equal quantity or use the distilled water only.

1.3 Connect the power cord

Remove the power cord from the winding frame (Figure 1 No.10), insert the plug into power socket.

Notes: All the operations mentioned above should be carried out with dry hands. Please don't use this product and other high power electrical appliances at the same time to avoid circuit overload.

1.4 Start up the product and uplift the pressing plate forcibly

Turn the power switch (Figure 1 No.9) to position "I", and at this point, the POWER light (Figure 2 No.5) on the control panel in red. Press the POWER button 2 seconds to start up the product and the pressing plate will be opened and uplifted to the highest position automatically.

II. Use this product

2.1 Select a suitable menu mode

Select the menu mode according to the ironing instructions shown on clothing label. If there is no instruction but you know the type of shell fabric, please select the menu mode according to Reference Table for Ironing Operation of different shell fabrics. It is suggested to ironing an inconspicuous place at first to ensure the most suitable temperature.

Warning:

If the cloth is made of different shell fabrics, please always ironing it based on the shell fabric with the lowest temperature requirement.

If there are many cloths which made of different shell fabrics need to ironing, please classify them and ironing the costume made of the shell fabric with the lowest temperature requirement firstly, such as synthetic fiber.

Reference Table for Ironing Operation of Different Shell Fabrics

Type of shell fabrics	Menu selection	Optimal ironing method
Polypropylene fiber, polyamide (nylon), vinyl and acrylic fabric	Nylon	Put a piece of cloth on it and ironing the reverse side of fabric through dry ironing method. Don't spray water on the fabric directly to avoid spots.
Silk	Silk	Ironing the reverse side of fabric through dry ironing method.
Wool	Wool	The steam should be swept over the fabric rather than press the pressing plate on it directly.
Cotton	Cotton	Press the pressing plate tightly and ironing the fabric through steam ironing method. If it is a fabric in dark color, please ironing the reverse side to avoid an "aurora" sense.
Linen	Linen	Press the pressing plate tightly and ironing the fabric through steam ironing method. If it is a fabric in dark color, please iron the reverse side to avoid an "aurora" sense.

2.2 Steam ironing

The steam ironing is applicable to the menu modes of wool, cotton and linen. Place the fabric on the roller horizontally and select the corresponding menu according to different shell fabrics. The heating indicator light (Figure 2 No.1) is "on" while preheating and "off" after heating, with the whole process taking about 2 minutes. The steam indicator light (Figure 2 No.2) is blue and flickering while heating. The blue indicator light stops flickering and is "on" when the temperature of pressing plate reaches the standard to operate steam ironing. And by this time, press the foot pedal (Figure 4 No.1), the product releases the steam automatically after the pressing plate is pressed. Thus, the ironing operation works.

2.3 No-steam ironing (dry ironing)

The no-steam ironing can be achieved in each menu mode of this product. select the corresponding menu according to different shell fabrics. Press the steam selection button (Figure 2 No.2) to cancel the steam function after the red heating indicator light is off. Then press the foot pedal (Figure 4 No.1) and the dry ironing operation works.

2.4 Automatic Energy-saving function

In the working status, if there is no operation for 15 minutes, the product will automatically shut down and enter the standby status. The “Power” indicator (Figure 2 No.5) turns to RED.

2.5 Foot pedal

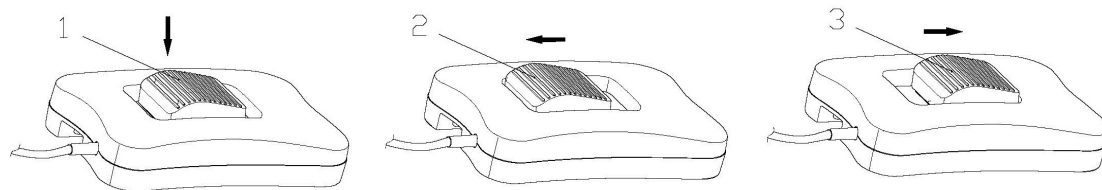


Figure 4

1. Press down the pedal, pressing plate will be closed. Pressing plate will be opened after releases the foot pedal.
2. Move the pedal forward, the roller will rotary forward.
3. Move the pedal backward, the roller will rotary backward.

2.6 Sprayer (Figure 1 No.8)

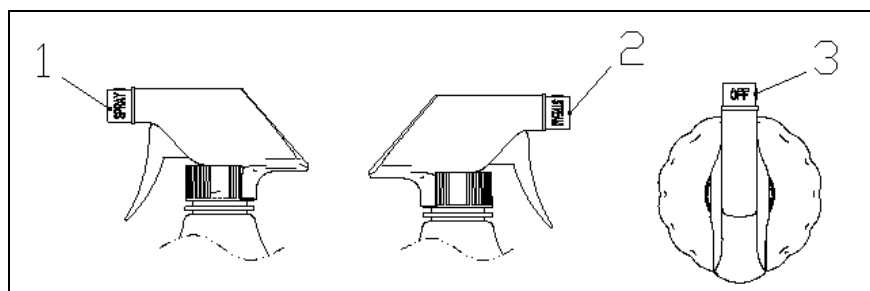


Figure 5

1. The stubborn wrinkles can be removed through spray function at any temperature (except for the shell fabric that should be ironed through dry ironing method only).
2. The sprayer should be filled with enough water.
3. Switch the spray nozzle (figure 5 No.1&2) to the upward showing “SPRAY” or “STEAM”. This sprayer includes two spray modes: SPRAY (figure 5 No.1) and STEAM (figure 5 No.2). In

the mode of SPRAY, the sprayer can wet the clothes fast with big water drops due to its long spray distance and rapid spray speed; while in the mode of STEAM, the spray distance is short and the atomization effect of water drops is better.

4. Please press the spray switch for several times to wet the clothes.
5. Please pour the water out of sprayer after use and switch the spray nozzle to the position of “OFF” upward (figure 5 No.3).

2.7 Pressure test and regulation of pressing plate

If the pressure of pressing plate is small, please regulate it manually according to the following steps:

1. Connect the power plug to power socket and switch the power switch (Figure 1 No.9) on the pedestal to position “I”. At this time, the POWER light (Figure 2 No.5) on control panel is red. Press the POWER button to start up the product and select the menu mode of shell fabric that is used most frequently, such as “cotton” (Figure 2 No.10), product starts to heating.
2. Press the function button (Figure 2 No.3) for 2 seconds to enter the pressing plate closing time setting function after the “beep”.
3. Press the function button (Figure 2 No.3) to reduce the closing time or press the “WOOL” button(Figure 2 No.9) to increase the closing time. You can know the current time from the number indicator(Figure 2 No.6). Every press will reduce/increase 0.1 second.
4. Place a white paper on the roller and press down the foot pedal(Figure 4 No.1) to test the pressure of pressing plate.
5. Regulate the pressure of pressing plate to an appropriate value and press the function button (Figure 2 No.3) in 2 seconds to save the setting.

III. Cleaning and maintenance

After use

1. Cool the product completely. Then, erase the incrustation and other sediments left on the pressing plate with wet towel and noncorrosive (liquid) detergent.
2. Press the foot pedal(Figure 4 No.1) in order to keeping the pressing plate pressed.
3. Press the POWER button (Figure 2 No.5) 2 seconds to shut down the product. Turn the power switch (Figure 1 No.9) to position “0”.
4. Pull out the power plug from power socket. Twine the power cord to store it properly.

Notes: The collision and friction should be avoided between pressing plate and sharp objects to keep the pressing plate smooth all the time. Don't clean the pressing plate with abrasive cloth, vinegar or other chemicals.

1. Please clean other parts of this product with wet towel.
2. Wash the water tank with water at regular intervals and empty the water tank completely after washing.

Storage

1. Take out the water tank from the pedestal, open the filler cap of water tank, and pour the water out of water tank.
2. After the pressing plate is cooled, press the foot pedal(Figure 4 No.1) to keeping the pressing plate (Figure 1 No.2) pressed.
3. Pull out the plug of power cord from power socket, twine the power cord around the winder, and fix the tail end of plug onto the clip of winder.
4. Please store this product in a dry and clean place, avoid direct sunlight.
5. Please remove the battery if need to store for a long time.

Environmental protection

When it comes to the disposal of this product, don't stack it together with ordinary household wastes. It should be delivered to the recycling center designated officially for environmental protection.

Maintenance and service

Please contact with the local dealer.

Trouble Shooting

No.	Fault phenomenon	Troubleshooting	Notes
1	No display on the panel	(1) Check whether the power cord is connected properly. (2) Check whether the power switch of this machine is switched to gear “T”.	Please contact with the dealer if the problems can not be solved.
3	No steam	(1) The steam indicator light on panel is white and flickering. This means that the temperature of pressing plate fails to reach the standard to release steam, so please keep heating till the steam indicator light becomes blue. (2) If the selection button for shell fabric is switched to the gear of “nylon” or “silk”, the steam function is disused by default. (3) If the indicator light of water level shows a status of water shortage, please fill water into the water tank.	
4	No heating of pressing plate	(1) Please select the menu of corresponding shell fabric.	
5	Water drops on pressing plate	(1) It's normal for a small amount of dripping. (2) Please increase the heating time if the temperature of pressing plate is too low. (3) Pay attention on the ironing time interval.	
6	A small amount of powdered particles around steam holes	(1) Those are the residua of carburetor and can be wiped with wet cloth.	
7	Failure to open the pressing plate or vibrating and buzzing for 3 seconds while opening	(1) Press down the foot pedal repeatedly. (2) Turn off the power supply and restart the machine.	
8	Poor performance of ironing operation	(1) Regulate the pressure of pressing plate, refer to chapter II, 2.7 (2) Take clothes from the bottom to avoid stacking. (3) The clothes should be ironed by putting them into the roller smoothly. (4) Check the pressing plate surface, make sure it's slippery enough.	