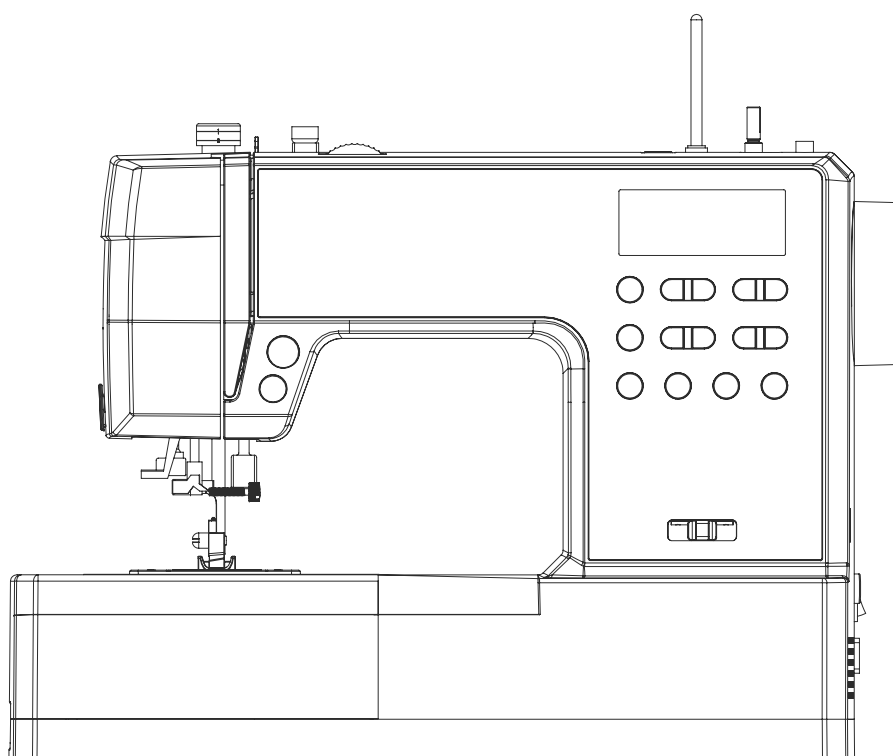


Lifestyle 460

INSTRUCTION MANUAL



Attention

For safety concerns, please read this instruction manual before using the machine, and please preserve this manual well for convenient reference at any time.

“IMPORTANT SAFETY INSTRUCTIONS”

Please read through this manual before using sewing machine, and please use the machine following safety instructions below.

“DANGER ____ To reduce the risk of electric shock:”

1. The appliance should never be left unattended when plugged in.
2. Always unplug this appliance from the electric outlet immediately after using and before cleaning.

“WARNING ____ To reduce the risk of burns, fire, electric shock, or injury to persons:”

1. Do not use the appliance as a toy. Caution is advised when the appliance is used by children, or near children. This sewing machine can be used by children aged from 8 years and above and persons with reduced physical, sensory or mental capabilities or lack of experience and knowledge if they have been given supervision or instruction concerning use of the sewing machine in a safe way and understand the hazards involved. Children shall not play with the sewing machine. Cleaning and user maintenance shall not be made by children without supervision.
2. Use this appliance only for its intended use as described in this manual. Use only attachments recommended by the manufacturer as contained in this manual.
3. Never operate this appliance if it has a damaged cord or plug, if it is not working properly, if it has been dropped or damaged, or dropped into water. Return the appliance to the nearest authorized dealer or service center for examination, repair, electrical or mechanical adjustment.
4. Never operate the appliance with any air openings blocked. Keep ventilation openings of the sewing machine and foot control free from the accumulation of lint, dust, and loose cloth.
5. Keep fingers away from all moving parts. Special care is required around the sewing machine needle.
6. Always use the proper stitch plate. The wrong plate can cause the needle to break.
7. Do not use bent needles.
8. Do not pull or push fabric while stitching. It may deflect the needle causing it to break.
9. Switch the sewing machine off ("O") when making any adjustments in the needle area, such as threading needle, changing needle, threading bobbin, or changing presser foot.

10. Always unplug the machine from the electrical outlet when removing covers, when lubricating or when making any other user servicing adjustments mentioned in the instruction manual.
11. Never drop or insert any object into any opening.
12. Do not use outdoors.
13. Do not operate where aerosol (spray) products are being used or where oxygen is being administered.
14. To disconnect, turn all controls to the off ("O") position, then remove plug from outlet.
15. Do not unplug by pulling on cord. To unplug, grasp the plug, not the cord.
16. Basically, the machine should be disconnected from the electricity supply when not in use.
17. If the power cord of this appliance is damaged, it must be replaced with a special cord by your nearest authorized dealer or service center.
18. When you sew slowly for long time, machine will have heat or unusual smell occurs. In this case, disconnect the plug from the wall outlet and use it after a while. Contact your nearest dealer if it still occurs.
19. Don't use the machine if it's wet or in humid environment.
20. The sewing machine is equipped with a LED lamp. If the LED lamp is broken, it must be replaced by the manufacturer or its service agent in order to avoid a hazard.
21. Never place anything on the foot control.
22. The machine must only be used with foot controller type C-8001.
23. The sound pressure level under normal operating conditions is 75dB(A).
24. Keep the instruction at a suitable place that close to the machine, and hand it over if you give the machine to a third party.

"SAVE THESE INSTRUCTIONS"

"This sewing machine is intended for household use only."



Please be sure to read safety precautions in "To use the sewing machine safely" in the Instruction Manual before use to fully understand the functions and operating procedures of the sewing machine so as to use the sewing machine for a long time.

After you have read the Instruction Manual, please be sure to keep it together with the warranty so that you can read it whenever necessary.

To use the sewing machine safely

Marks and pictographs included in the Instruction Manual and shown on the sewing machine are used so as to ensure safe operation of the sewing machine and to prevent possible risk of injury to the user and other people.

Warning marks are used for different purposes as described below.

 WARNING	Indicates that there is a possible risk of death or serious injury if this mark is ignored and the sewing machine is used in a wrong manner.
 CAUTION	Indicates the operation, etc. which can cause a possible risk of personal injury and/or physical damage if this mark is ignored and the sewing machine is used in a wrong manner.

WARNING

For the combination of the material and the thread and needle, in particular, refer to the explanation table in "Replacement of the needle".

If the needle or thread does not match the material used such as in the case that an extra heavyweight material (e.g., denim) is sewn with a thin needle (#11 or higher), the needle can break resulting in an unexpected personal injury.

Other precautions

- Do not put the sewing machine under the direct sunlight or in a humid place.
- Do not wipe the sewing machine with solvent such as thinner.

Be aware that the following state can take place since the sewing machine incorporates semi-conductor electronic parts and precise electronic circuits.

- * The operating temperature of the sewing machine is between 5°C and 40°C. Do not use the sewing machine under the direct sunlight, near the burning things such as a stove and candle, or in a humid place. By so doing, the temperature in the interior portion of the sewing machine can rise or the coating of the power cord can melt, causing fire or electrical shock.

CONTENTS

GETTING READY TO SEW

Principal parts of the machine	1
Sewing table	2
Accessories	2
Type of presser foot chart	3
Connecting the machine	4
Winding the bobbin	5
Inserting the bobbin	6
Threading the upper thread	7
Using the needle threader	8
Raising up the lower thread	9
Adjusting presser foot pressure	10
Replacing the needle	11
Changing the presser foot	11
Two-step presser foot lifter	12
To raise or drop the feed dogs	12
Matching needle/ fabric/ thread	13
LCD screen	14
Function buttons	15
On/off button	15
Reverse button	16
Auto-Lock/Stop button	16
Needle up/down position button	16
Speed limiting adjustment lever	16
Stitch width adjustment button	17
Stitch length adjustment button	17
Stitch select button	17

SEWING BASICS

Pattern chart	18
Thread tension	19
Useful skills	20
Sewing corners	20
Reverse	20
Free arm	20
Sewing on the heavy fabric	21
Cutting the thread	21
Straight stitches	22
Zigzag stitches	22
Stretch stitches	23

ORDINARY SEWING

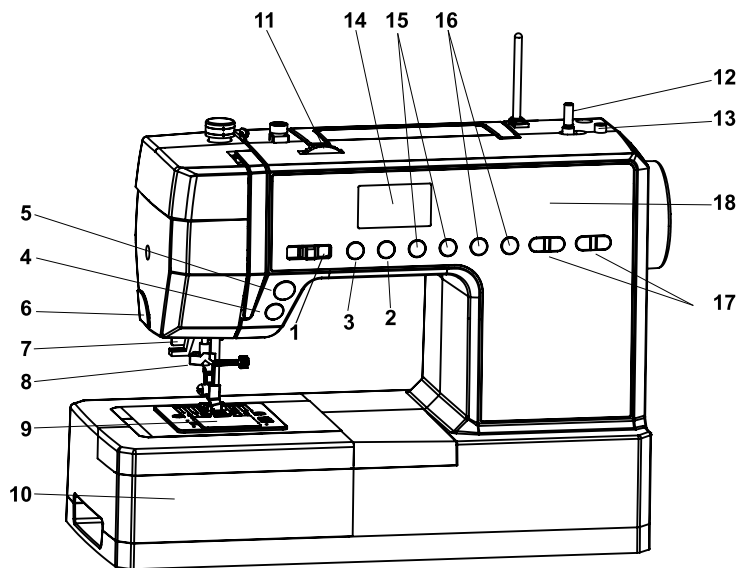
Use general presser foot	23
Button sewing	24
Buttonhole stitching.	25
Making a buttonhole on stretch fabrics	27
Eyelet stitch.	28
Bartack stitch	29
Zipper insertion	30
Inserting a centered zipper	30
Inserting a side zipper	31
Satin stitch sewing	32
Scallop stitch	32
Smocking	33

APPENDIX

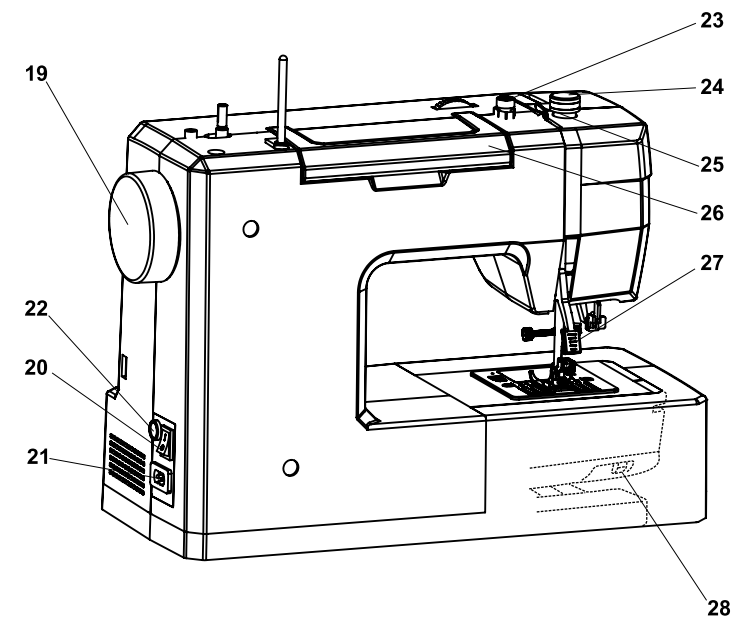
Warning functions	34
Instruction message display	34
Warning beeping sound	34
Maintenance	35
Cleaning the screen	35
Cleaning the sewing machine surface	35
Trouble shooting guide.	37

Technical data

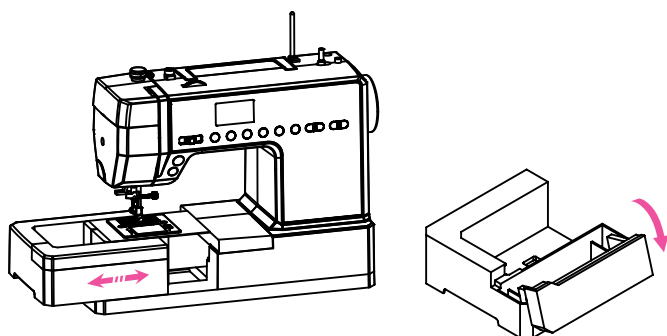
Rated voltage		100-240V/ 50-60 Hz
Power rating	-Total	70Watts
Dimensions		Approx.450 x 240 x 350 mm (LxWxH)
Weight	-Sewing machine	Approx.7.2kg/5.8kg
Material		Aluminum/Plastic
Operating elements	-Main power switch	Available
	-Foot controller	Available
Display elements	-Sewing light	Available



Principal parts of the machine



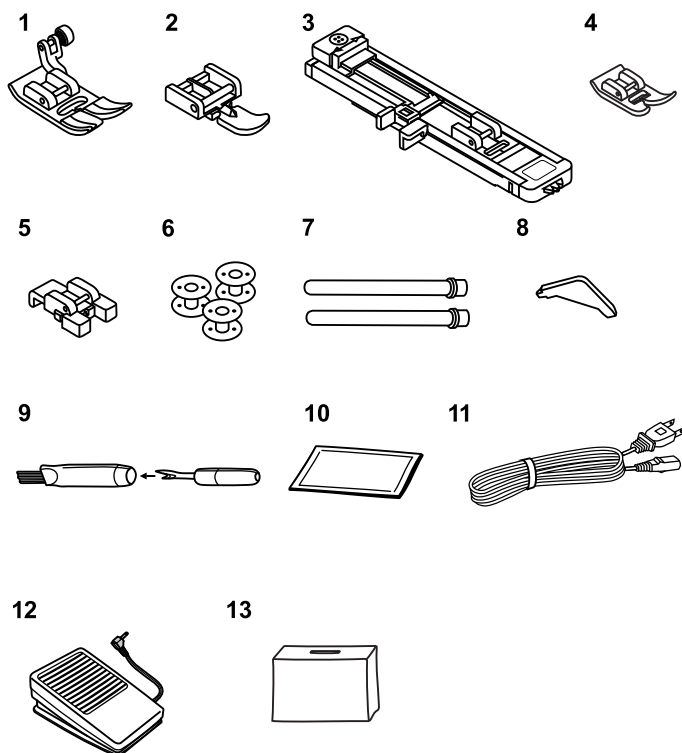
1. Speed limiting adjustment lever
2. Needle up/down position button
3. Auto-lock button
4. Reverse button
5. Start/stop button
6. Thread cutter
7. Buttonhole lever
8. Auto needle threader
9. Bobbin cover plate
10. Accessory box
11. Tension dial
12. Bobbin winder spindle
13. Bobbin winder stopper
14. LCD screen
15. Stitch width adjustment button
16. Stitch length adjustment button
17. Stitch selection buttons
18. Quick reference plate
19. Handwheel
20. Main power switch
21. Main plug socket
22. Foot controller connector
23. Bobbin thread guide
24. Presser foot pressure
25. Upper thread guide
26. Handle
27. Presser foot lifter
28. Drop feed lever



Sewing table

Keep the snap-in sewing table horizontal, and pull it in the direction of the arrow.

The inside of the snap-in sewing table is used as an accessory box.






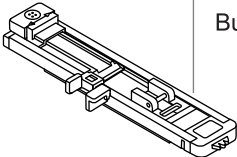






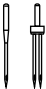


Accessories

Standard

1. Standard presser foot
2. Zipper foot
3. Buttonhole foot
4. Stitch foot
5. Button sewing foot
6. Bobbin (3x)
7. Auxiliary spool pin (2x)
8. Screwdriver (L-shape)
9. Seam ripper/brush
10. Pack of needles (3x)
11. Power cord
12. Foot controller
13. Case

Type and application of presser foot chart

PRESSER FOOT	APPLICATION	NEEDLE
 Standard Presser foot	General sewing, Patchwork stitches, Decorative stitching, Smocking, Fagoting, etc. Note: buttonhole sewing unavailable	
 Zipper foot	Inserting zippers 	
 Buttonhole foot	Buttonhole sewing 	
 Button sewing foot	Button sewing 	
 Anti-skipping foot	This foot helps to prevent stitch-skipping on stretch fabrics	

Note:

- Double needle is optional, not included in the accessories.
- Sewing with double needle need switching to double needle mode.

Connecting the machine

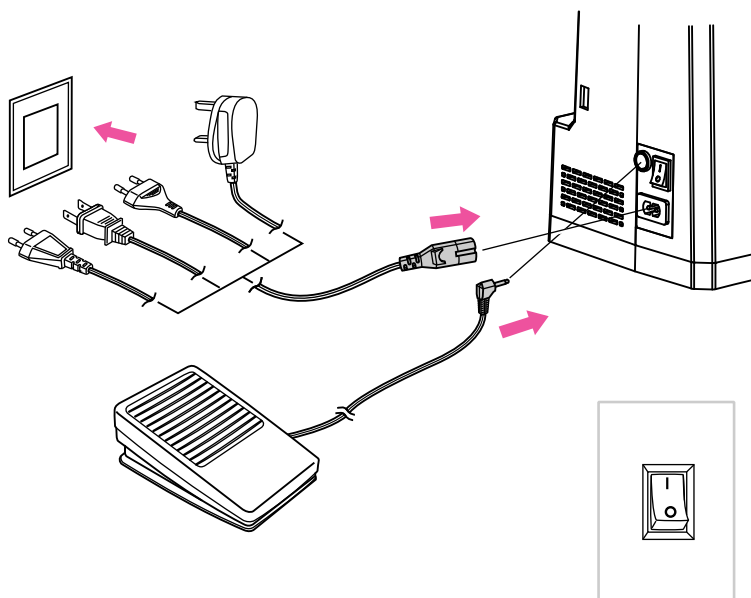
Before connecting the power supply, make sure that the voltage and frequency shown on the rating plate is conforming with your mains power.

Place the machine on a stable table.

1. Connect the power cord to the machine by inserting the 2-hole plug into the mains plug socket.
2. Connect the power line plug to the wall outlet.

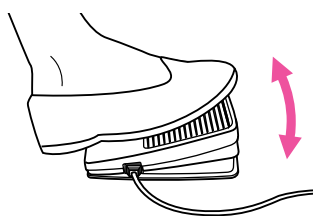
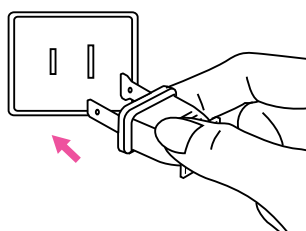
Connect the foot controller plug if you use.

3. Turn on the power switch.
4. The sewing lamp will light up when the switch is turned on.
5. After switching off, it will take some time to consume the residual power in the circuitry. The light does not turn off immediately after switching off the power. This is normal phenomenon for an energy efficient appliance.



Attention:

Always make sure that the machine is unplugged from power source and the main switch is off ("O"). when the machine is not in use and before inserting or removing parts.



Polarized plug information

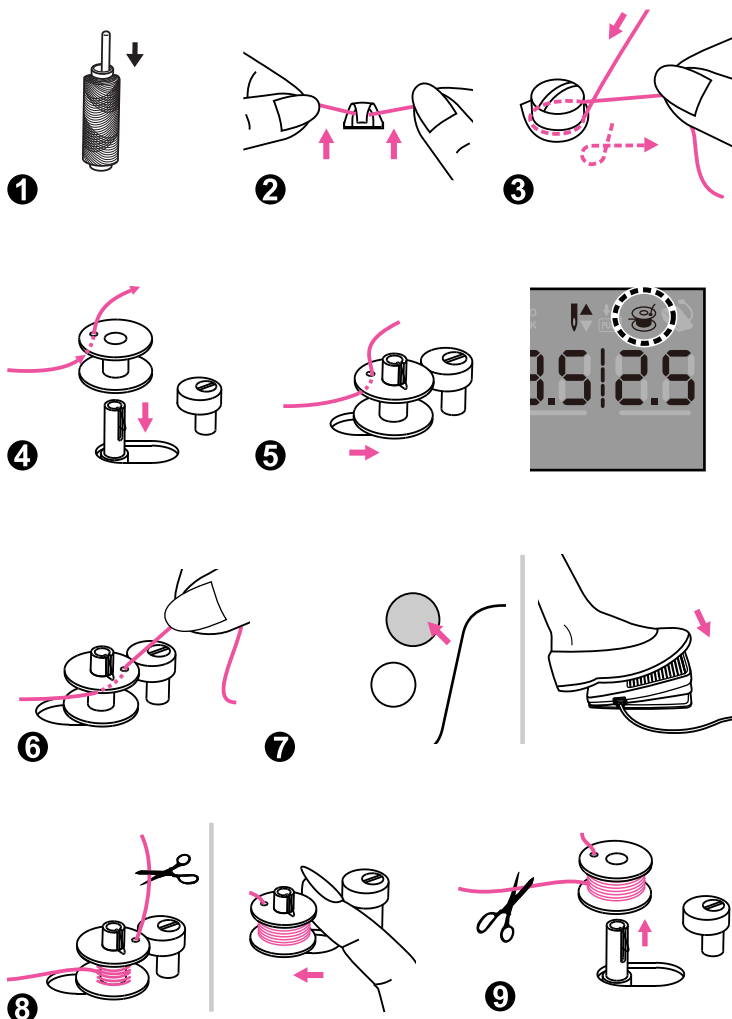
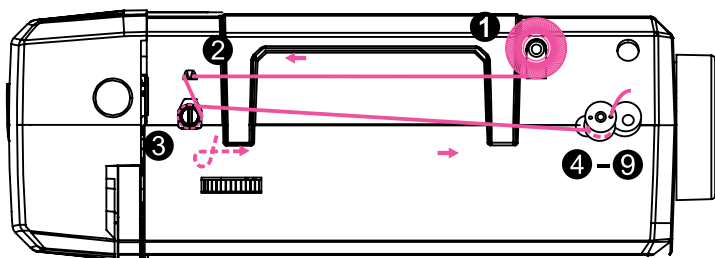
This appliance has a polarized plug (one blade wider than the other), to reduce the risk of electrical shock; this plug will fit in a polarized outlet only one way. If the plug does not fit fully in the outlet, reverse the plug. If it still does not fit, contact a qualified electrician to install the proper outlet. Do not modify the plug in any way.

Foot Control

With the sewing machine turned off, insert the foot control plug into its connector on the sewing machine.

Turn on the sewing machine, and then slowly depress the foot control to start sewing. Release the foot control to stop the sewing machine.

Even if you use foot controller, start/stop button is available.

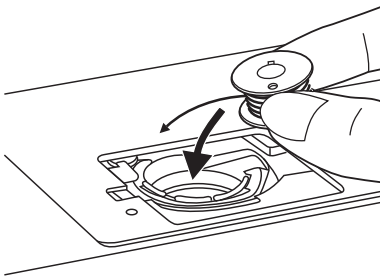


Winding the bobbin

1. Place the thread and spool cap onto the spool pin.
For smaller spools of thread, place spool cap with the small side next to the spool or use the small spool cap.
2. Snap the thread into the thread guide.
3. Wind the thread clockwise around the bobbin winder tension discs.
4. Place the thread end through one of the inner holes in the bobbin as illustrated and place empty bobbin on the spindle.
5. Push the bobbin to right.
When the bobbin winder spindle is pushed to the right, which is the "bobbin winding position", the symbol "⏻" appears on the LCD screen. It will disappear when the bobbin winder spindle is pushed to the left, which is the "sewing position".
6. Hold the thread tail securely in one hand.
7. Press on the foot control or the Start/stop button to start winding the bobbin.
8. After the bobbin has wound a few turns stop the machine and cut the thread near the hole of the bobbin. Continue filling the bobbin until it is full.
Once the spool is full, it rotates slowly. Release the pedal or stop the machine. Push the bobbin winder spindle to left.
9. Cut the thread and then remove the bobbin.

Note:

- When the bobbin winder switch is placed on the right "bobbin winding position", the buttons will not work. To start sewing, push the bobbin winder switch to the left "sewing position".
- If you find the bobbin winding the thread unevenly, you can adjust the height of the winder tension disc (3) to improve it.



Inserting the bobbin

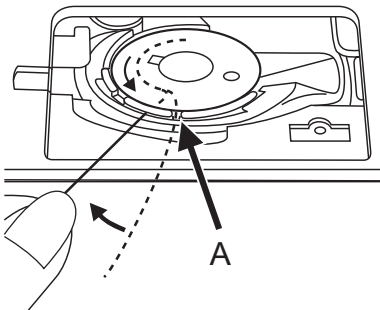


Attention:

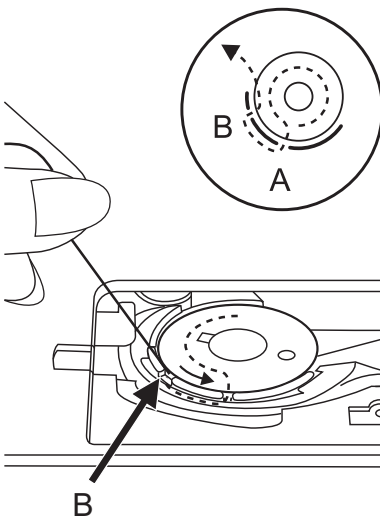
Turn power switch to off ("O") before inserting or removing the bobbin.

When inserting or removing the bobbin, the needle and presser foot must be fully raised.

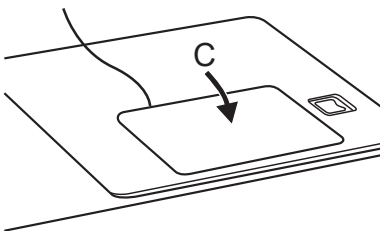
Insert the bobbin in the bobbin case with the thread running in a counterclockwise direction (arrow).



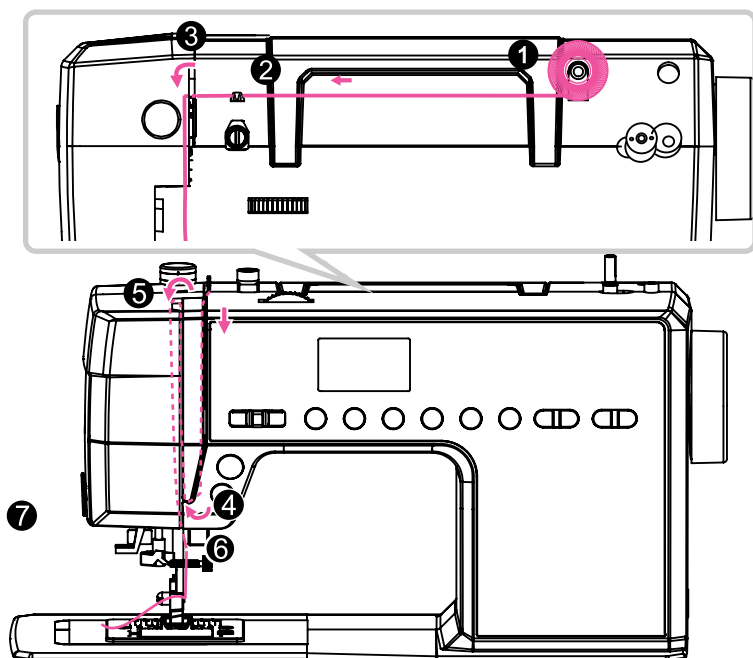
Pull the thread through the slit (A).



Draw the thread at the arrow markings into the stitch plate thread guide to slit(B).



Close the bobbin cover plate(C).



Threading the upper thread

Note:

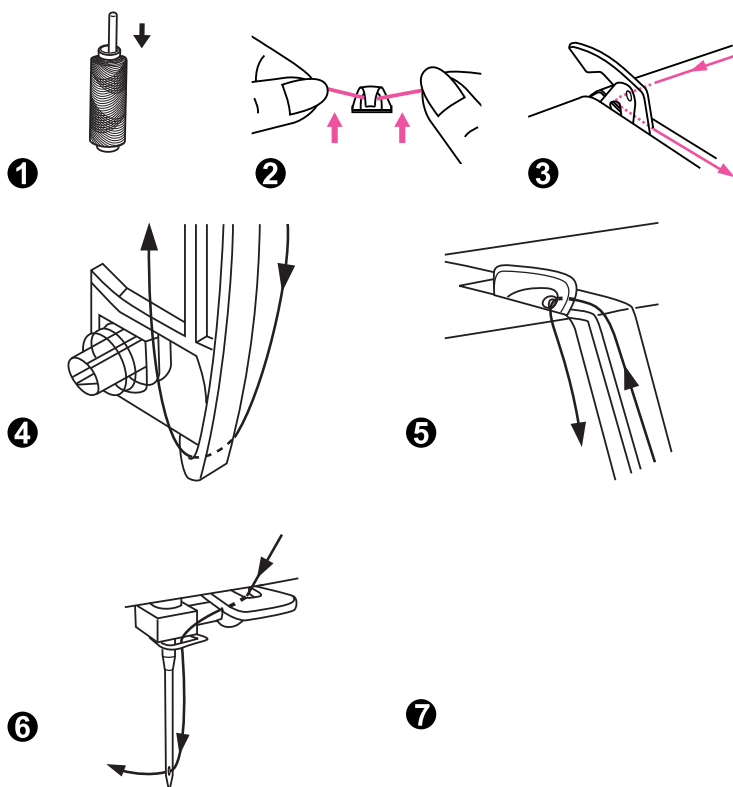
It is important to carry out the threading correctly as by not doing so several sewing problems could result.

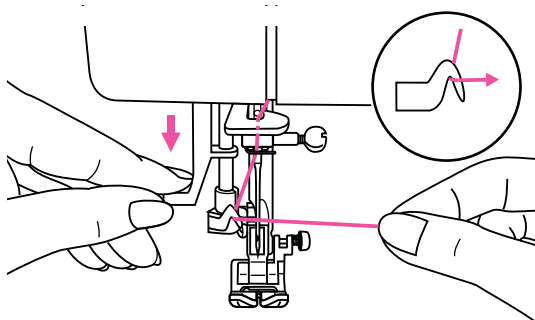
Start by raising the needle to its highest point, and also raise the presser foot to release the tension discs.

1. Place the thread and spool cap onto the spool pin.
2. Draw the thread from the spool through the upper thread guide.
3. Guide the thread around the thread guide pulling the thread through the pre-tension spring as illustrated
4. Thread the tension module by passing the thread between the silver discs.
5. Then, down and around the check spring holder.
6. At the top of this movement pass the thread from right to the left through the slotted eye of the take-up lever and then downwards again.

Pass the thread behind the flat, horizontal thread guide. Guide the thread through the wire loop. Pull the end of the thread through the needle from front to rear, and pull out about 10 cm of thread.

Use the needle threader to thread the needle. (On the next page.)





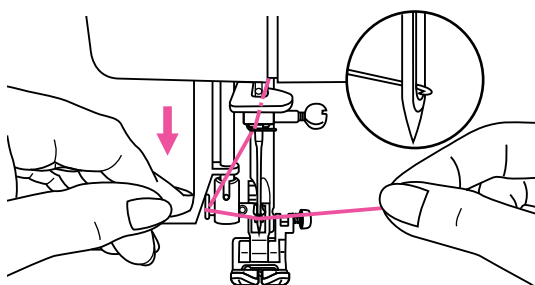
Using the needle threader

Raise the needle to its highest position and lower the presser foot.

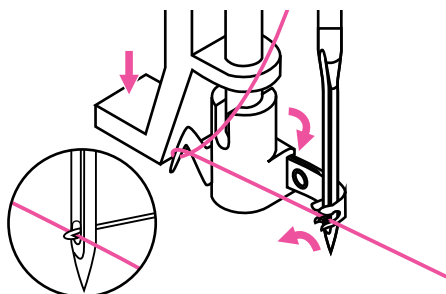
Attention:

Turn power switch to the off position ("O").

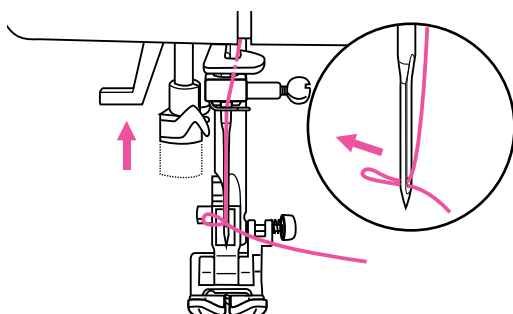
Lower the needle threader lever slowly and draw the thread through the thread guide as illustrated and then to the right.



The needle threader automatically turns to the threading position and the hook pin passes through the needle eye.

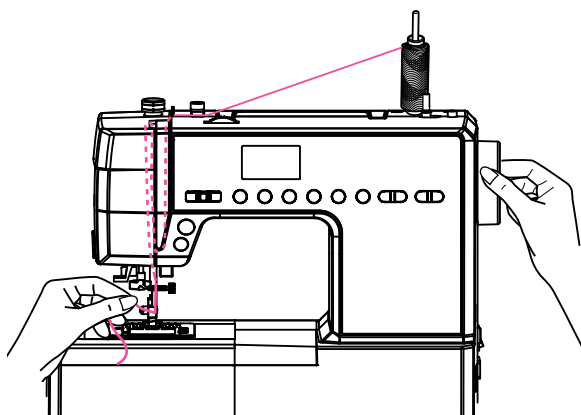


Take the thread in front of the needle.



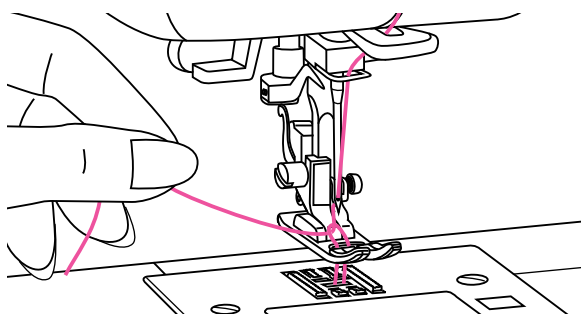
Hold the thread loosely and release the lever slowly. The hook will turn and pass the thread through the needle eye forming a loop.

Pull the thread through the needle eye.

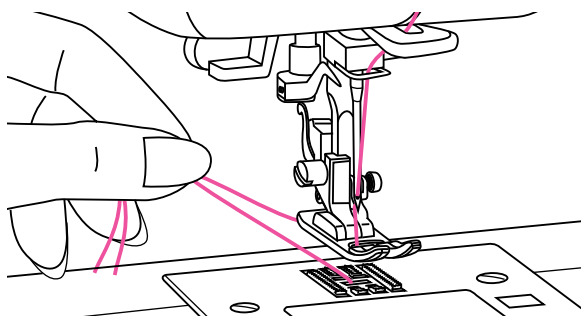


Raising up the lower thread

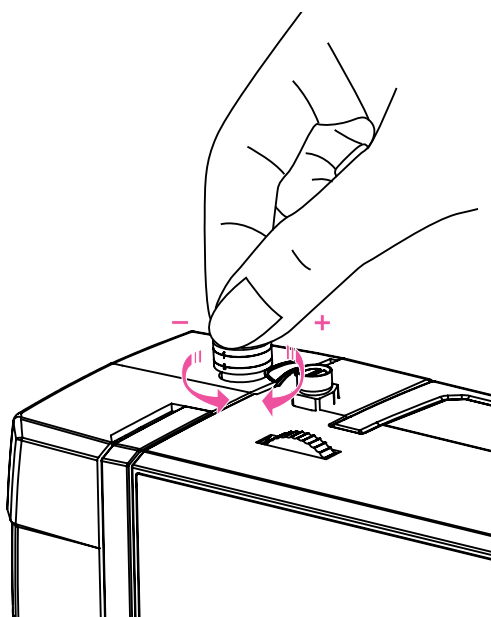
1. Hold the upper thread with the left hand. Turn the handwheel towards you (counterclockwise) lowering, then raising the needle.



2. Gently pull on the upper thread to bring the bobbin thread up through the needle plate hole. The bobbin thread will come up in a loop.



3. Pull both threads to the back under the presser foot.



Adjusting presser foot pressure

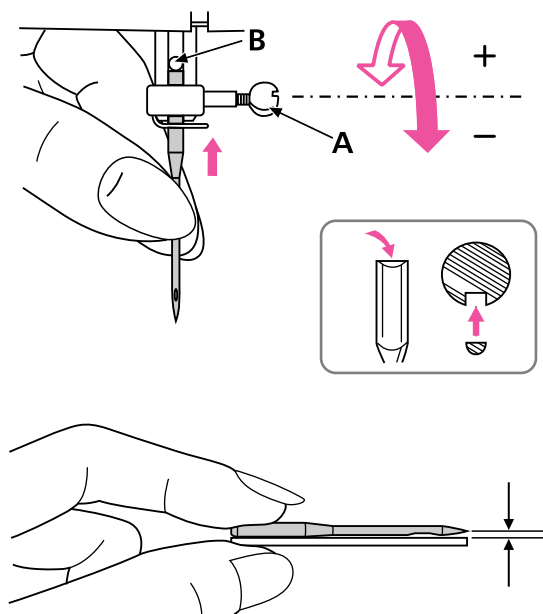
Standard presser foot pressure set at "2".

The presser foot pressure of the machine has been pre-set and no need for change unless sewing particular type of fabric (light-or-heavy weight).

If you do need to adjust the presser foot pressure, turn the presser adjusting screw by ones finger.

For sewing very thin fabric, loosen the pressure by turning the screw counterclockwise to move the screw upward and the pressure decreased. If kept turning the screw, it could be take out. By that time, just turn the screw clockwise, it could be locked back and readjust the pressure.

For heavy fabric, tighten the pressure by turning the screw clockwise to move the screw downward and the pressure increased. Once screw could not be moved any further, it has been reached the bottom, please do not turn any more.



Replacing the needle

! Attention:
Turn power switch to off ("O") when carrying out any of the above operations!

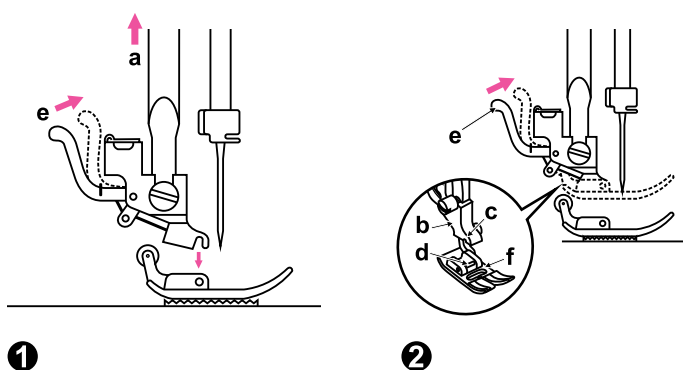
Change the needle regularly, especially if it is showing signs of wear and causing problems. Insert the needle following the illustrated instructions.

- A. Loosen the needle clamp screw and tighten again after inserting the new needle. The flat side of the shaft should be towards the back.
- B. Insert the needle as far up as it will go.

Needles must be in perfect condition.

Problems can occur with:

- Bent needles
- Blunt needles
- Damaged points



Changing the presser foot

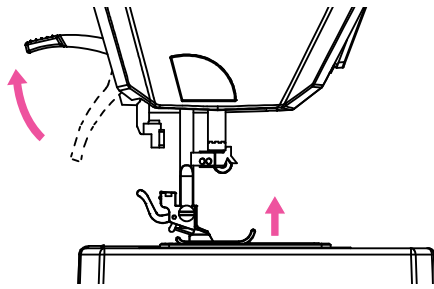
! Attention:
Turn power switch to off ("O") when carrying out any of the above operations!

Removing the presser foot (1)

Raise the presser foot.
Press the black lever (e) and the foot will disengage.

Attaching the presser foot (2)

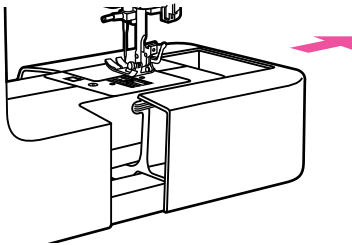
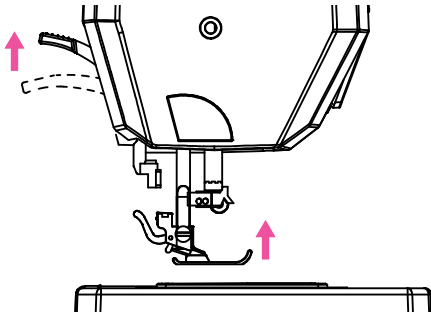
Lower the presser foot holder (b) until the cut-out (c) is directly above the pin (d).
Press the black lever (e).
Lower the presser foot holder (b) and the presser foot (f) will engage automatically.



Two-step presser foot lifter

The presser foot lifter raises and lowers your presser foot.

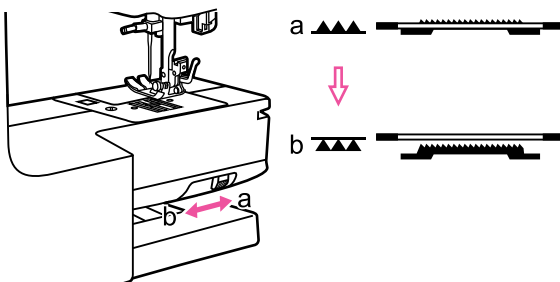
When sewing several layers or thick fabrics, the presser foot can be raised a second stage for easy positioning of the work.



To raise or drop the feed dogs

With the sewing table off the machine, the feed dog adjustment lever can be seen on the base in back of the sewing machine.

Sliding the lever to the "▲▲▲" (b) will lower the feed dog, for example during button sewing. If you wish to continue sewing normally, slide the lever to the "▲▲▲" (a) in order to raise the feed dogs.



The feed dog will not rise up if you do not turn the handwheel, even if the lever is slid to the right. Make a complete turn to raise the feed dogs.

Matching needle/ fabric/ thread

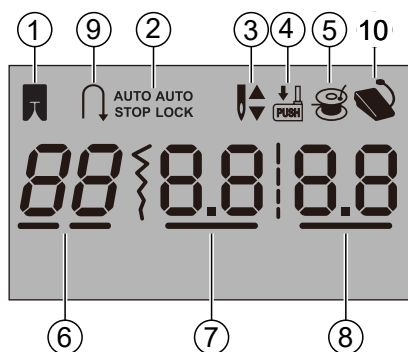
Needle, fabric, thread selection guide

NEEDLE SIZE	FABRICS	THREAD
9-11 (70-80)	Lightweight fabrics-thin cottons, voile, serge, silk, muslin, Qiana, interlocks, cotton knits, tricot, jerseys, crepes, woven polyester, shirt & blouse fabrics.	Light-duty thread in cotton, nylon, polyester or cotton wrapped polyester.
11-14 (80-90)	Medium weight fabrics-cotton, satin, sailcloth, double knits, lightweight woollens.	Most threads sold are medium size and suitable for these fabrics and needle sizes.
14 (90)	Medium weight fabrics-cotton duck, woolen, heavier knits, terrycloth, denims.	Use polyester threads on synthetic materials and cotton on natural woven fabrics for best results.
16 (100)	Heavyweight fabrics-canvas, woollens, outdoor tent and quilted fabrics, denims, upholstery material (light to medium).	Always use the same thread on top and bottom.
18 (110)	Heavy woollens, overcoat fabrics, upholstery fabrics, some leathers and vinyls.	Heavy duty thread, carpet thread.

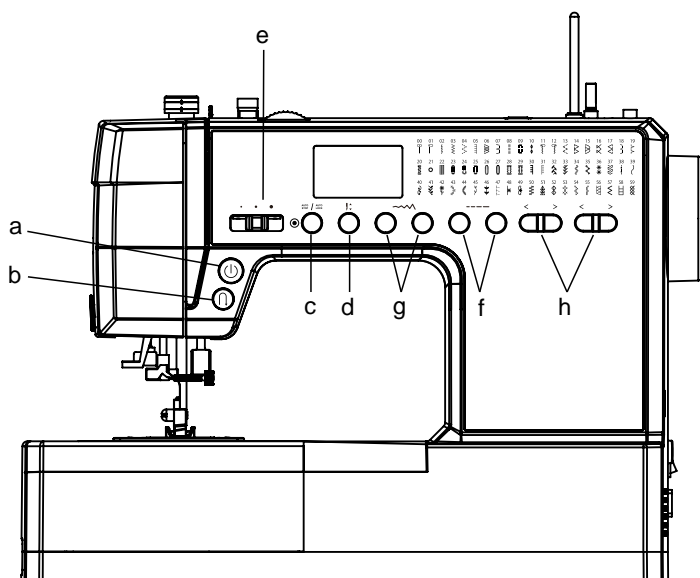
Note:

- In general, fine threads and needles are used for sewing fine fabrics, and thicker threads are used for sewing heavy fabrics.
- Always test thread and needle size on a small piece of fabric which will be used for actual sewing.
- Use the same thread for needle and bobbin.
- Use a backing for fine or stretchy fabrics.

LCD Screen pattern mode

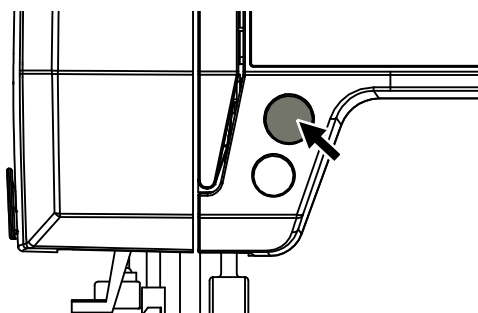


- ① Presser foot
- ② Auto-lock
- ③ Up/Down needle position
- ④ Buttonhole lever
- ⑤ Bobbin winding
- ⑥ Stitch number
- ⑦ Stitch width
- ⑧ Stitch length
- ⑨ Reverse
- ⑩ Foot pedal



Function buttons

- a. On/Off switch button
- b. Reverse button
- c. Auto-lock/stop button
- d. Up/Down needle position button
- e. Speed adjustment button
- f. Stitch length dial button
- g. Stitch width dial button
- h. Stitch selection button



Operation introduction

On/Off button

Press once start sewing, press again stop sewing.

Button color shows machine status.

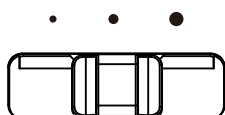
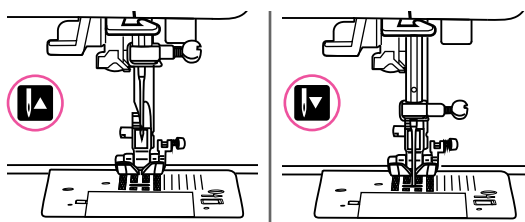
Green flash: start on

Green continue: on sewing

Red: sewing unavailable

(Presser foot lever stays lifted or sewing thread stuck)

Orange : Machine is winding(winding lever on the right).



Reverse button

Pressing the reverse button when sewing straight line, sewing machine will sew backwards in low speed. Release reverse button, machine will stop sewing automatically.

Auto-lock/stop button

1. Press auto-lock button before sewing, machine will run 3-stitch fix locking (Except buttonhole stitch).
2. Press auto-lock button during sewing, machine will run 3-stitch fix locking (Except buttonhole stitch).

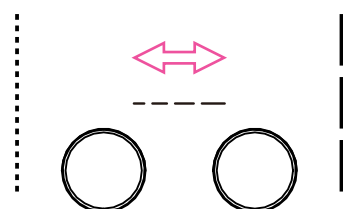
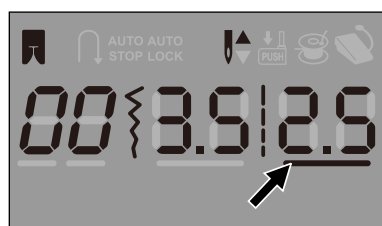
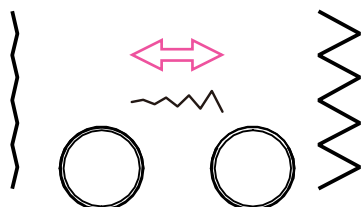
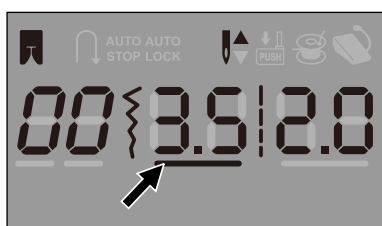
Needle up/down position button

With the Needle up/ down position button, you decide whether the needle shall stop in the up position or in the material when you stop sewing.

Press the button so that the arrow, on the LCD screen, will point upward "▲" and the needle will stop in the highest position. When you press the button so that the arrow points downward "▼", the machine will stop with the needle in the lowest position.

Speed limiting adjustment lever

The speed limiting adjustment lever can control the sewing speed. To increase the speed, slide the lever to the right, to decrease the sewing speed, slide the lever to the left.



Stitch width adjustment button

When you select a stitch, the machine will automatically set the recommended stitch width, which will be indicated by numbers on the LCD screen. The stitch width can be regulated by pressing the stitch width adjustment buttons

Stitch length adjustment button

When you select a stitch the machine will automatically set the recommended stitch length which will be indicated by numbers on the LCD screen. The stitch length can be adjusted by pressing the stitch length adjustment buttons.

Stitch should be adjusted to proper position according to fabric, needle and thread applied. In general, heavy fabric matches longer stitch length.

Stitch select button

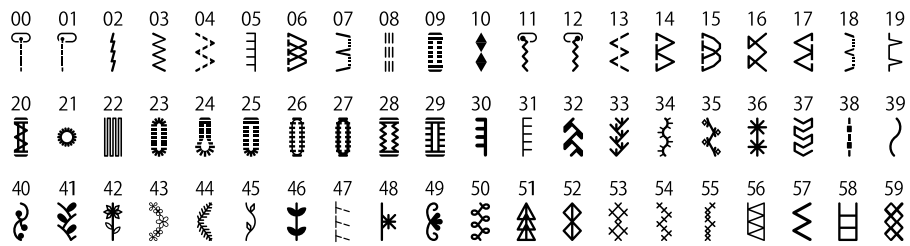
Press Stitch selection button to free change stitch pattern and letter pattern.

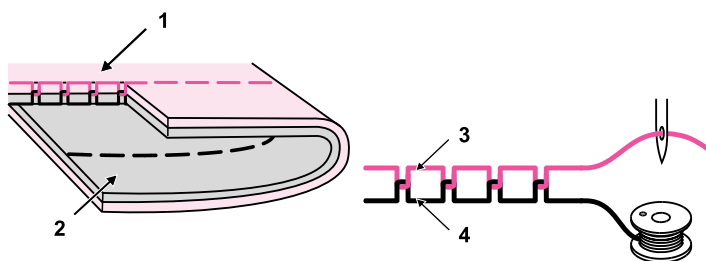
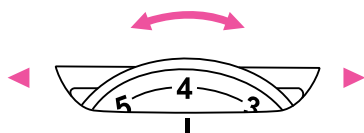
Press arrow button to change and select pattern number.

Left button changes the tens digit.

Right button changes the units digit.

Pattern chart



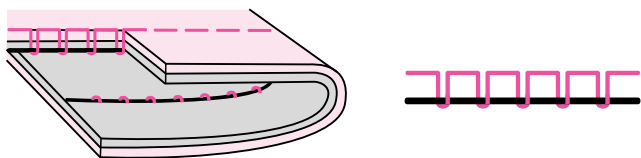


Thread tension

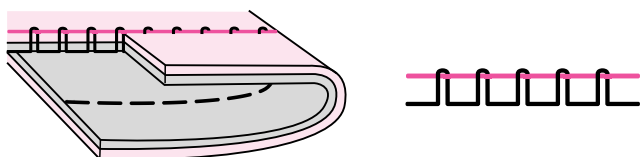
- Basic thread tension setting: "4"
- To increase the tension, turn the dial to the next number up. To reduce the tension, turn the dial to the next number down.
- Proper setting of tension is important to good sewing.
- For all decorative sewing you will always obtain a nicer stitch and less fabric puckering when the upper thread appears on the bottom side of your fabric.

Normal thread tension for straight stitch sewing.

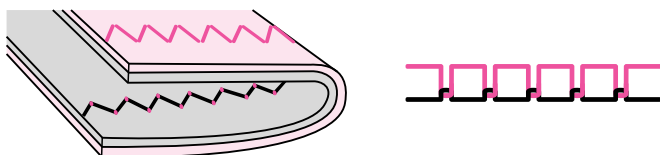
- (1) Surface
- (2) Reverse side
- (3) Upper thread
- (4) Bobbin thread



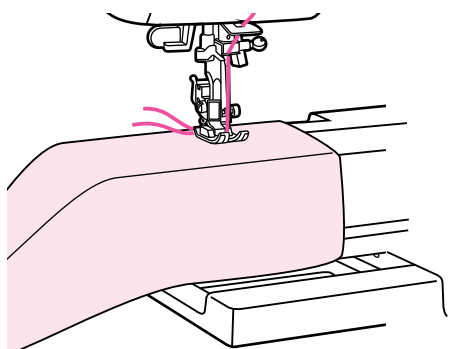
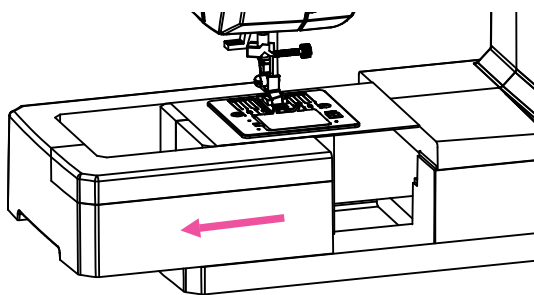
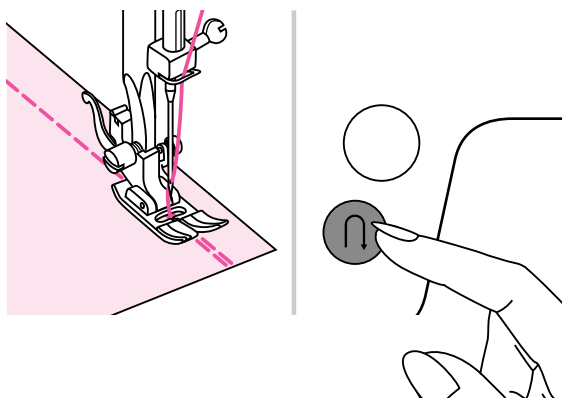
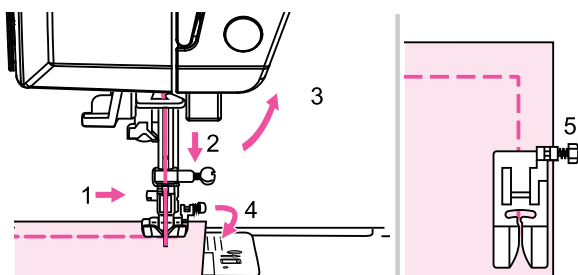
Thread tension is too loose for straight stitch sewing. Turn dial to higher number.



Thread tension is too tight for straight stitch sewing. Turn dial to lower number.



Normal thread tension for zig zag and decorative sewing.



Useful skills

Sewing corners

1. Stop the sewing machine when you reach a corner.
2. Lower the needle into the fabric manually or by pressing the needle up/ down button once.
3. Raise the presser foot.
4. Use the needle as a pivot and turn the fabric.
5. Lower the presser foot and resume sewing.

Reverse

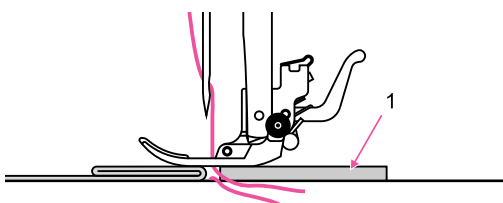
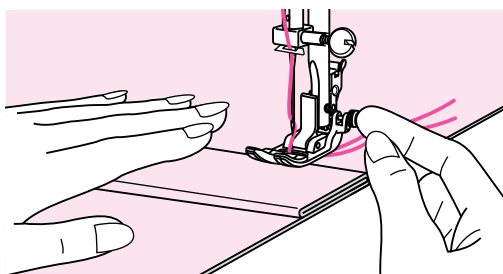
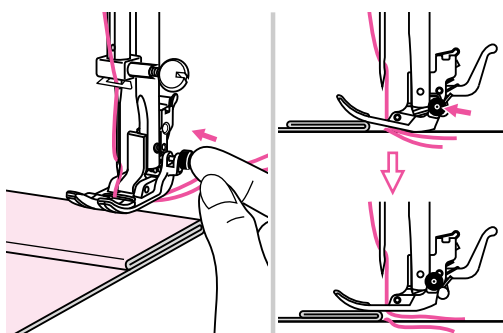
Reverse stitching is used to secure the threads at the beginning and at the end of a seam.

Press the reverse button and sew 4-5 stitches.

The machine will sew forward when the button is released.

Free arm

Free-arm sewing is convenient for sewing tubular areas such as pant hems and cuffs.



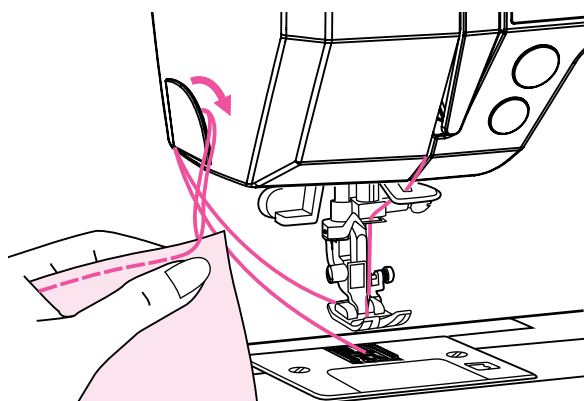
Sewing on heavy fabrics

The black button on the right side of the presser foot will lock the presser foot in a horizontal position if you push it in before lowering the presser foot. This ensures even feeding at the beginning of a seam and helps when sewing multiple layers of fabric such as sewing over seams when hemming jeans.

When you reach the point of an increased thickness, lower the needle and raise the presser foot. Press the toe of the foot and push in the black button, then lower the foot and continue sewing.

You also can place another piece of fabric with the same thickness at the back of the seam. Or support the presser foot while feeding by hand and sewing toward the folded side.

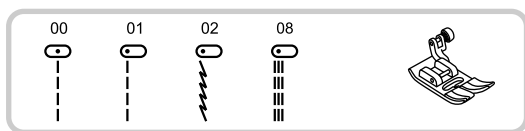
(1) Cardboard or thick fabric



Cutting the thread

Raise the presser foot. Remove the fabric, draw the threads to the left side of the face cover and cut using the thread cutter.

The threads are cut at the proper length to start the next seam.



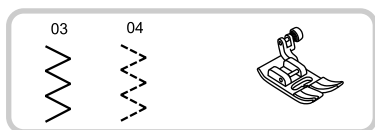
Straight stitches

Patterns 00-02, 08 are for straight stitches, 3.5 is its average setting for center position.

Changing the stitch length

To shorten the stitch length, press the "<" stitch length adjustment button. For a longer stitch length, press the ">" stitch length adjustment button.

Generally speaking, the thicker the fabric, thread and needle, the longer the stitch should be.



Zigzag stitches

Adjusting the stitch width

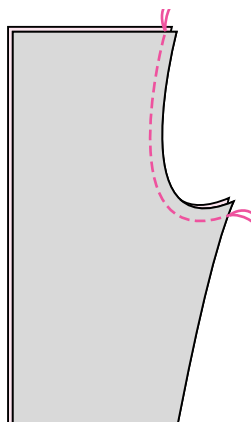
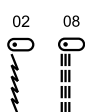
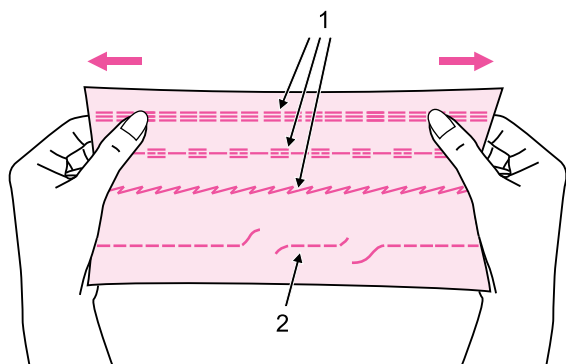
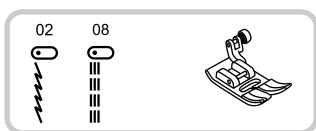
Dial width button from 0.0 to 7.0, the bigger the number is, the wider the stitch become, when the number is changed into 0.0, the stitch go straight.

Adjusting the stitch length

The density of zigzag stitches increase as the setting of stitch length approaches "0.0".

Neat zigzag stitches are usually achieved at "1.0-2.5".

Closed up zigzag stitches (close together) are referred to as a satin stitch.



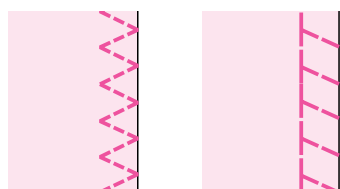
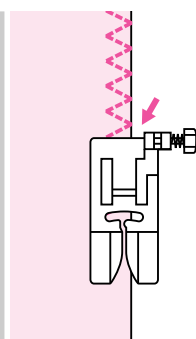
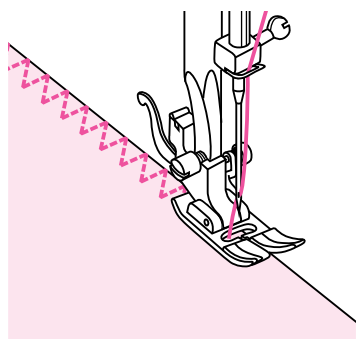
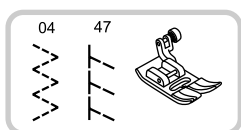
Stretch stitches

Use this stitch with knitted, tricot or other stretchy fabrics. The stitch enables your seam to stretch without breaking the thread.

These stitches can also be used as a decorative top stitch.

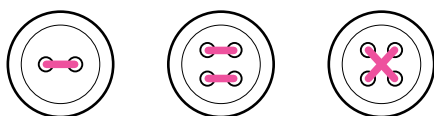
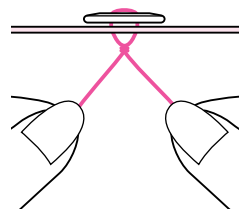
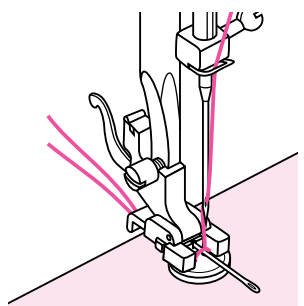
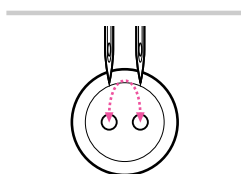
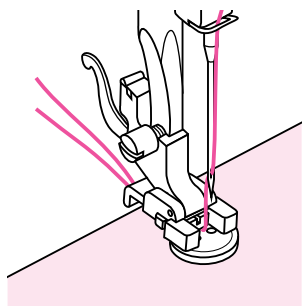
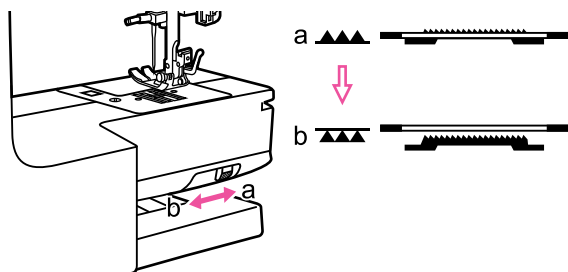
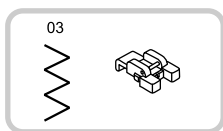
- (1) Traight stretch stitch
- (2) Straight stitch

Straight stretch stitch is used to add triple reinforcement to stretch and hardwearing seams.



Use general presser foot

Change average presser foot. Choose hemming pattern, adjust the width and position according to fabric, take care that the right sewing thread must right cover the edge of the fabric when sewing this pattern.



Button sewing

Change the presser foot to the button sewing foot.

Move the drop feed control to "▲▲▲" to lower the feed dogs.

Position the work under the foot. Place the button in the desired position, lower the foot.

Select zig zag pattern. Adjust the stitch width to "2.5-4.5" according to the distance between the two holes of the button.

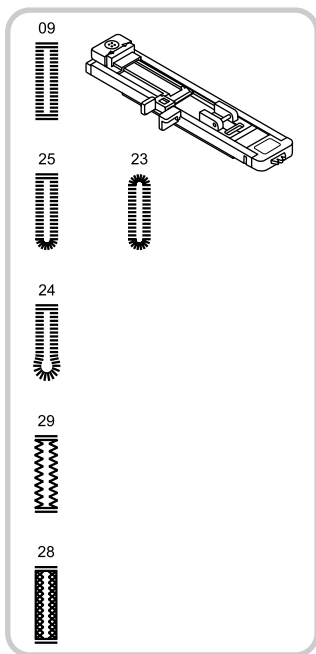
Turn the handwheel to check that the needle goes cleanly into the left and right holes of the button.

Before sewing, press the Auto-lock button to sew reinforcement stitches automatically at the beginning and at the end of the stitch.

If a shank is required (ex. sew on coats or jackets), place a darning needle on top of the button and sew.

Pull end of the upper thread to the wrong side of the fabric, then tie it with the bobbin thread.

For buttons with 4 holes, sew through the front two holes first, push work forward and then sew through the back two holes.



Buttonhole stitching

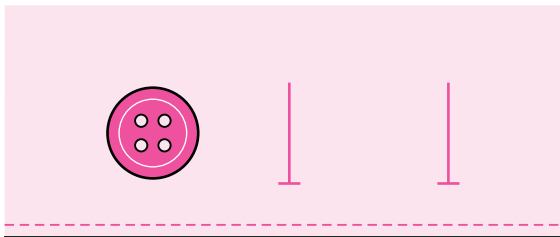
Buttonhole sewing to match the size of the button is possible.

For stretch fabric or thin fabric, it is recommended to use a stabilizer for a better buttonhole finish.

- 09 For thin or medium fabric
- 25 For horizontal holes on blouses or shirts made from thin or medium fabric
- 24 For suits or overcoats
- 23 For thin or medium fabric
- 29 For jeans or stretch fabric with a coarse weave
- 28 For stretch fabric

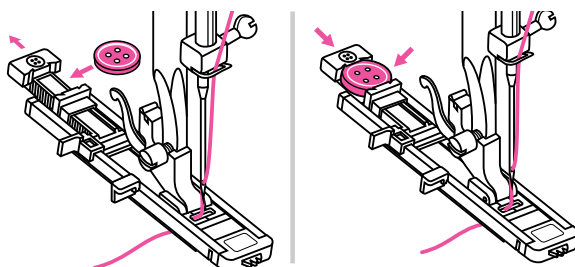
Note:

Before sewing a buttonhole on your project, practice on a scrap piece of the same type of fabric.



Mark the positions of the buttonhole on the fabric.

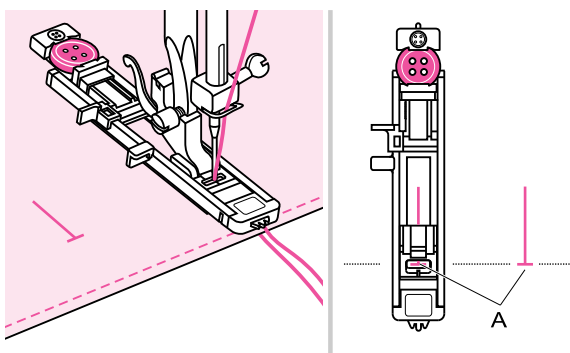
The maximum buttonhole length is 3cm (1 3/16 inch).
(Total of diameter + thickness of button.)



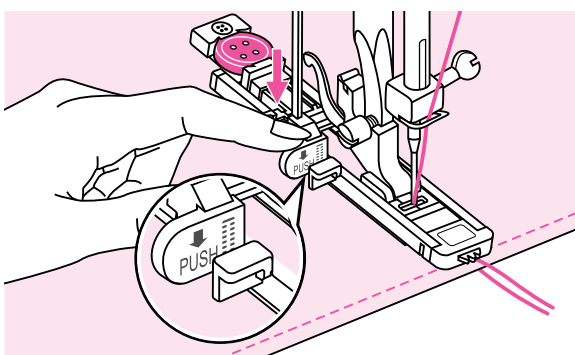
Attach the buttonhole foot, then pull out the button holder plate and insert the button.

The size of the buttonhole is determined by the button inserted in the button plate.

The thread should be passed through the hole in the presser foot, then be placed under the foot.

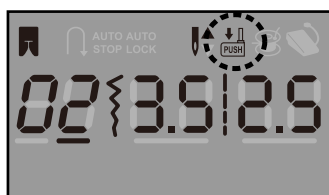


Select the buttonhole stitch.
Adjust the stitch width and the stitch length to the desired width and density.
Position the fabric under the presser foot with the front end of the buttonhole mark aligned with the center line on the buttonhole foot.



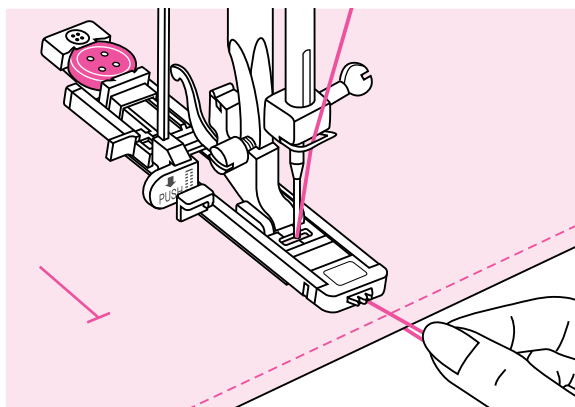
(A) Starting point

Pull the buttonhole lever all the way down and position it behind the bracket on the buttonhole foot.



Note:

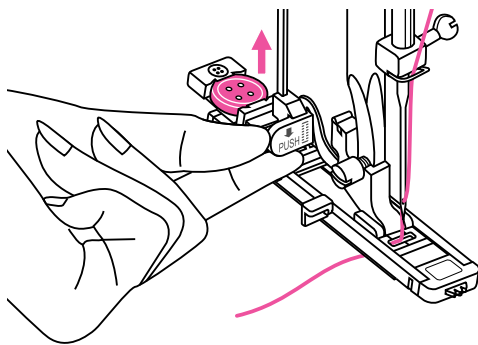
When you select any buttonhole pattern, LCD screen will be demonstrated the figure "PUSH", it is to remind you to lower the buttonhole lever.



While lightly holding the end of upper thread and start sewing.

Note:

Gently feed the fabric by hand.
Before stopping, the machine will automatically sew a reinforcement stitch after the buttonhole is sewn.

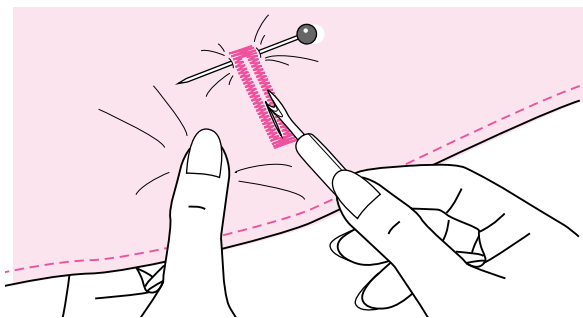


Raise the presser foot and cut thread. To restart the same buttonhole at the beginning, raise the presser foot to return to the starting position.

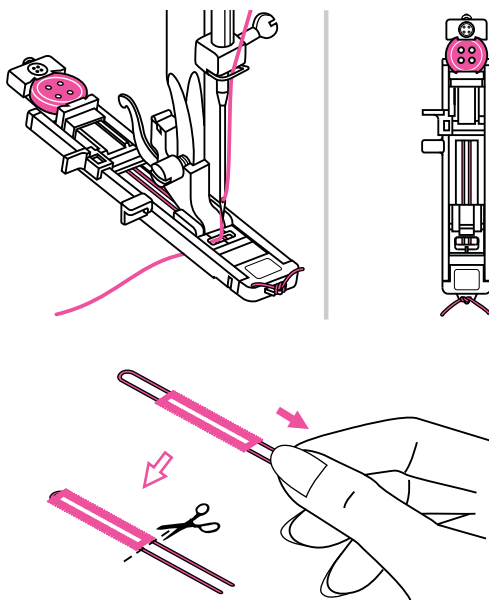


Attention:

After sewing the buttonholes, raise the buttonhole lever all the way up to its original position for other sewing.



Cut the center of the buttonhole being careful not to cut any stitches on either side. Use a pin as a stopper at the bar tack so you do not cut too much.



Making a buttonhole on stretch fabrics

When sewing buttonholes on stretch fabric, hook heavy thread or cord under the button-hole foot.

Attach the buttonhole foot and hook the gimp thread onto the back of the presser foot.

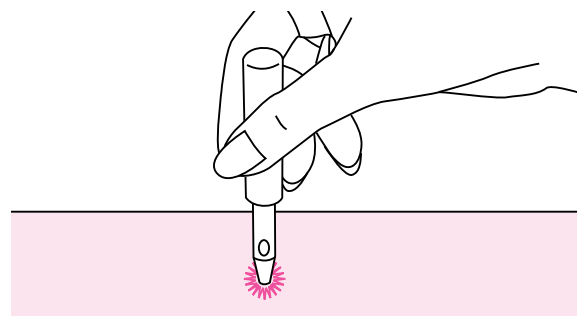
Bring the two gimp thread ends to the front of the foot and insert them into the grooves, then temporarily tie them there. Lower the presser foot and start sewing.

Set the stitch width to match the diameter of the gimp thread.

Once sewing is completed, pull the gimp thread gently to remove any slack, then trim off any excess.

Note:

It is suggested that you use interfacing on the backside of the fabric.



Eyelet stitch

Eyelet stitches are used for making belt holes and other similar applications.

Select pattern I 22 to get the eyelet stitch. Attach decorative stitch foot (A).

Press the "-" or "+" stitch width adjustment to button select the eyelet size.

Size of eyelet.

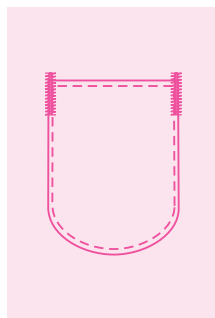
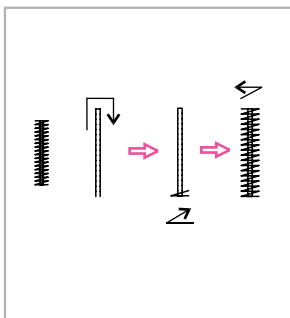
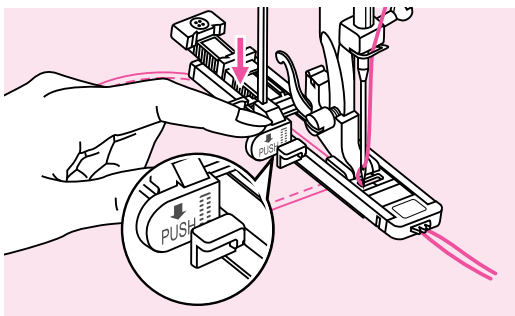
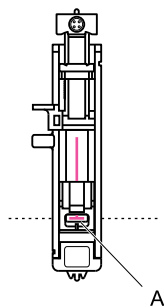
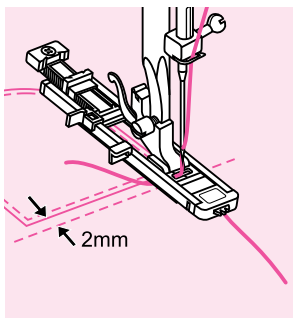
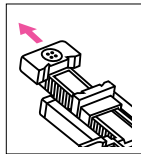
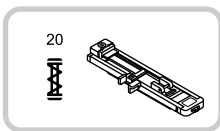
Lower the needle into the fabric at the beginning of the stitching, and then lower the presser foot lever.

Once sewing is completed, the machine automatically sews reinforcement stitches, then stops.

Make a hole at the center using an eyelet punch.

Note:

If thin thread is used, the stitching may be coarse. If this occurs, sew the eyelet twice one on top of the other.



Bartack stitch

Bar tack stitch is used to reinforce points subject to strain, such as pocket corners and openings.

Select pattern I 20 to get the darning stitch.

Change the presser foot to the buttonhole foot.

Pull the button holder to the rear. Set the button guide plate on the buttonhole foot to the desired length.

Position the fabric so that the needle is 2mm (1/16") in front of where you want the sewing to start, and then lower the presser foot.

(A) Starting point

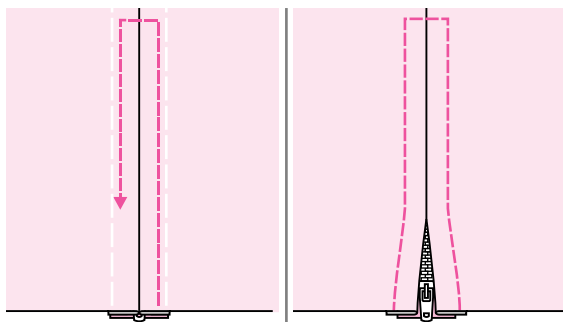
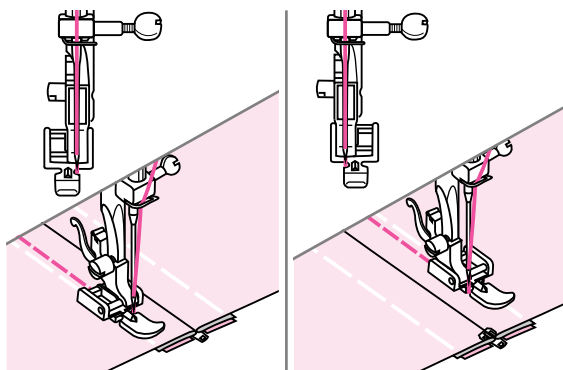
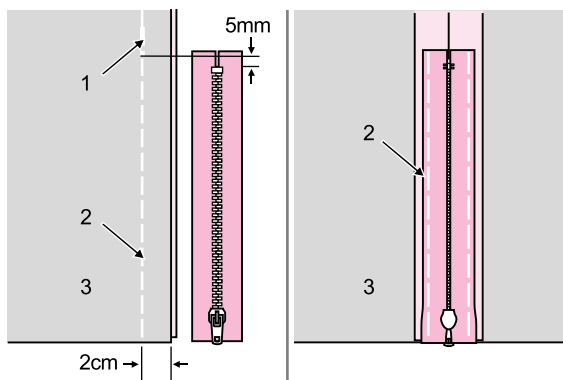
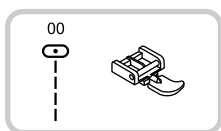
Pass the upper thread down through the hole in the presser foot. Pull down the buttonhole lever. The buttonhole lever is positioned behind the bracket on the buttonhole foot. Gently hold the end of the upper thread in your left hand, and then start sewing.

Bar tack stitches are sewn.

As an example, the illustration shows the procedure for sewing bar tacks at pocket corners.

! Attention:

After sewing the bar tack stitches, raise the buttonhole lever all the way up to its original position for other sewing.



Zipper insertion

This foot can be set to sew on each side of the zipper, the The edge of the foot guides the zipper to ensure straight placement.

! Attention:

Zipper foot should be used for sewing width center needle position straight stitch only. It is possible that needle could hit the presser foot and break when sewing other patterns.

- (1) Reverse stitches
- (2) Basting stitching
- (3) Reverse side

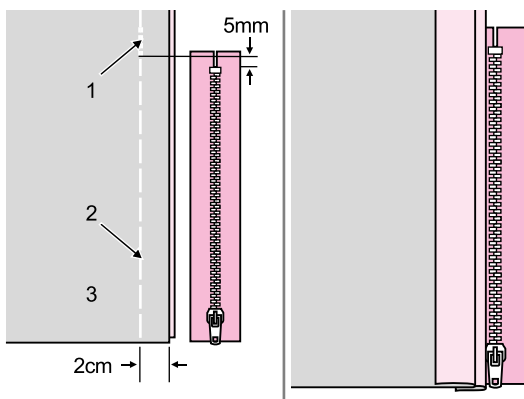
Inserting a centered zipper

- Place the right sides of the fabric together. Sew a bottom seam 2cm from the right edge to the zipper bottom stop position. Sew a few stitches in reverse to lock. Increase the stitch length to maximum, set the tension below 2, and baste the remaining length of the fabric.
- Press open the seam allowance. Place the zipper face down on the seam allowance with the teeth against the seam line. Baste the zipper tape.
- Attach the zipper foot. Attach the right side of the presser foot pin to the holder when sewing the left side of the zipper.
- Attach the left side of the presser foot pin to the presser foot holder when sewing the right side of the zipper.
- Stitching around the zipper.

Note:

When sewing, be sure that the needle does not touch the zipper, otherwise the needle may bend or break.

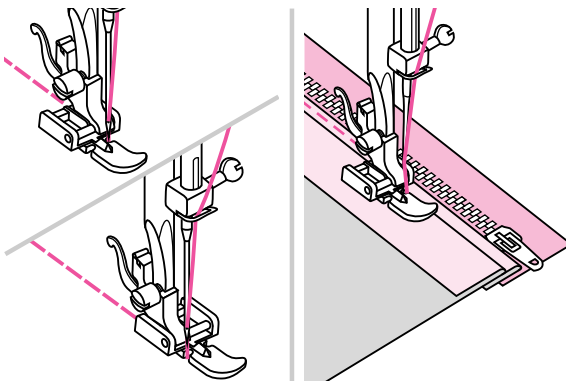
- Remove the basting and press.



Inserting a side zipper

- (1) Reverse stitches
- (2) Basting stitching
- (3) Reverse side

- Place the right sides of the fabric together. Sew a bottom seam 2cm from the right edge to the zipper bottom stop position. Sew a few stitches in reverse to lock. Increase the stitch length to maximum, set the tension below 2, and baste the remaining length of the fabric.



- Fold back to the left seam allowance.

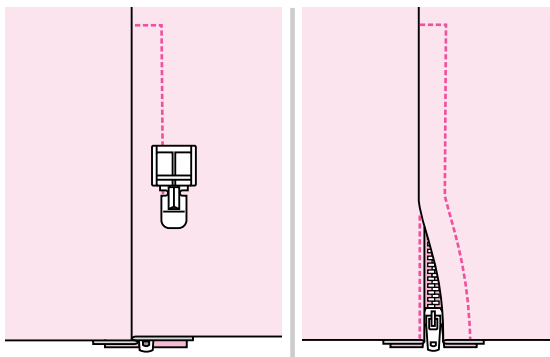
Turn under the right seam allowance to form 3mm (1/8 inch) fold.

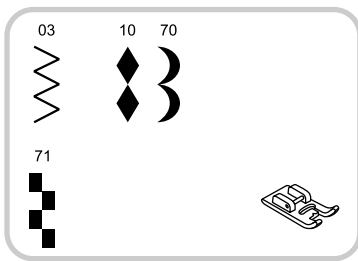
- Attach the zipper foot. Attach the right side of the presser foot pin to the holder when sewing the left side of the zipper. Attach the left side of the presser foot pin to the presser foot holder when sewing the right side of the zipper.

- Stitch the left side of zipper from bottom to top.

- Turn the fabric right side out, stitch across the lower end and right side of zipper.

- Stop about 5cm (2 inches) from the top of zipper. Remove the basting and open the zipper. Stitch the remainder of the seam.





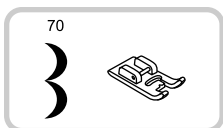
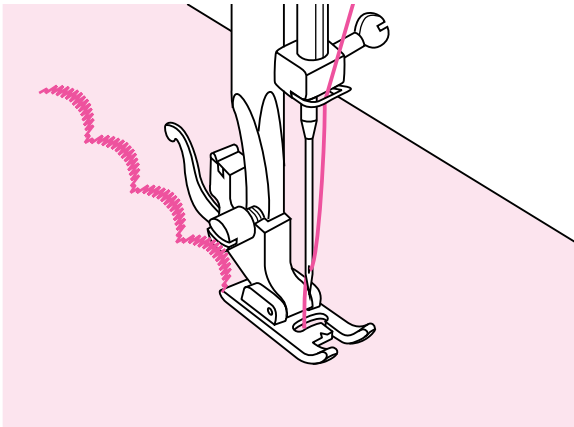
Satin stitch sewing

Use the decorate stitch foot for satin stitching and sewing decorative stitches. This foot has a full indentation on the underside to allowed easy sewing over the thickness of the stitches form by closely spaced zigzag stitches, and even feeding of the fabric.

To tailor the satin or decorative stitch pattern, you may adjust the length and width of the pattern by pressing the stitch length and width adjustment buttons. Experiment with fabric scraps until you get the desired length and width.

Note:

When sewing very thin fabrics, it is suggested that you use interfacing on the backside of the fabric.



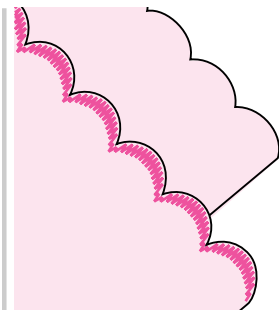
Scallop stitch

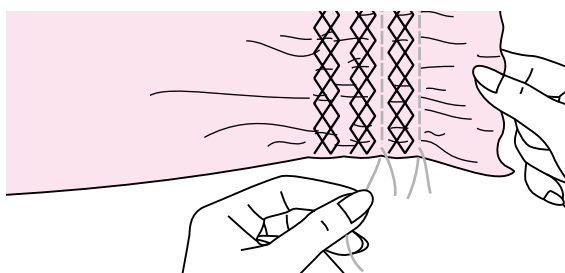
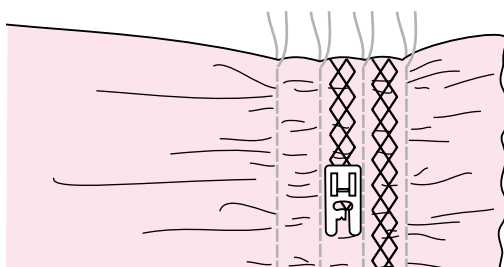
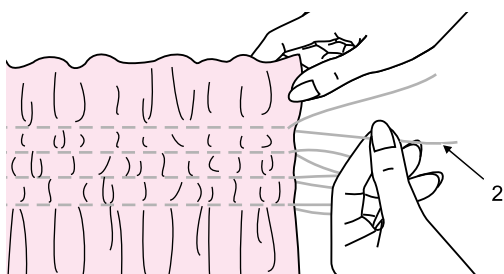
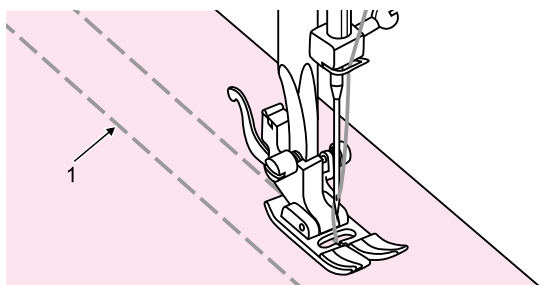
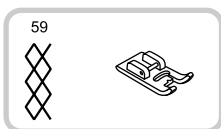
Stitch along the edge of the fabric, making sure not to sew directly on the edge of the fabric.

- * For better results, apply spray starch onto the fabric and press with a hot iron before it is sewn.

Trim along the stitches.

- * Be careful not to cut the stitches.





Smocking

The decorative stitch created by stitching or embroidering over gathers is called "smocking".

It is used to decorate the front of blouses or cuffs. The smocking stitch adds texture and elasticity to fabric.

Use the standard presser foot to sew basting lines 1cm (3/8 inch) apart, across the area to be smocked.

(1) Basting

Knot the threads along one edge.

Pull the bobbin threads and distribute the gathers evenly. Secure the threads at the other end.

(2) Bobbin thread

Reduce the tension, if necessary and sew decorative pattern stitches between the straight seams.

Pull out the basting.



Warning functions

Instruction message display

- Lowering the buttonhole lever

When you select any buttonhole pattern or darning pattern, LCD screen will show the figure "↓". It is to remind you to lower the buttonhole lever.

- Bobbin winding

When the bobbin winder spindle is activated for bobbin winding (in the rightmost position) this figure "☺" appears on the LCD screen as a reminder.

Please look through the "Trouble shooting guide" to find the solution.

After the problem has been solved, the machine will continue to sew.

Note:

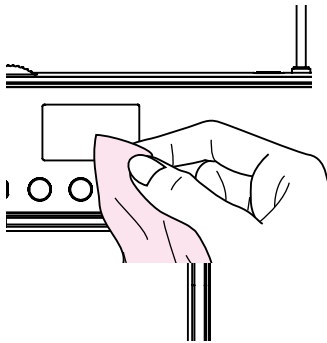
If the problem is still not solved, please contact your local dealer.

Warning beeping sound

- When operating correctly
: 1 beep
- When the memory is full 30 units of pattern
: 2-short beeps
- When operating incorrectly
: 3-short beeps
- When the sewing machine is in trouble and can't sew
: 3-short beeps

! Attention:

During the sewing, if the thread get jammed inside the hook stopping the needle from moving and you continue pressing the foot control, the security switch will stop the machine completely. In order to restart the sewing machine, you will have to turn the on/off switch to the OFF position and then ON again.



Maintenance

Attention:

Disconnect the power cord from the wall socket before cleaning the screen and sewing machine surface, otherwise injury or electrical shock may result.

Cleaning the screen

If the front panel is dirty, wipe it gently with a soft, dry cloth.

Do not use any organic solvents or detergents.

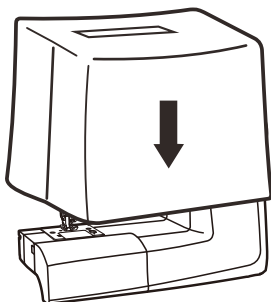
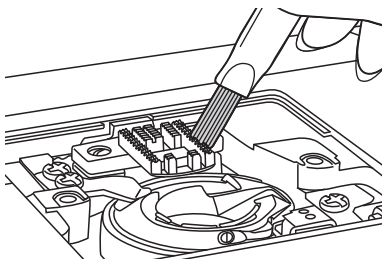
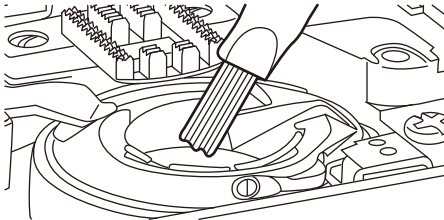
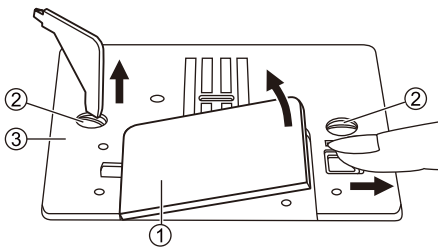
Cleaning the sewing machine surface

If the surface of the sewing machine is dirty, lightly soak a cloth in mild detergent, squeeze it out firmly and then wipe the surface. After cleaning it once in this way, wipe the surface again with a dry cloth.

Attention:

The LED light this machine applied is of very long service life, no need to change often.

When be needing changing, please contact local dealers.



Cleaning the hook

If lint and bits of thread accumulate in the hook, this will interfere with the smooth operation of the machine. Check regularly and clean the stitching mechanism when necessary.

⚠ Attention:

Disconnect the machine from the wall outlet before carrying out any maintenance.

Remove the bobbin cover plate and bobbin.

Clean the bobbin holder with a brush.

Remove the needle, presser foot and presser foot holder.

Remove the screw holding the needle plate and remove the needle plate.

Clean the feed dog and bobbin case with a brush.

Also clean them, using a soft, dry cloth.

Storage

Please use provided dust-proof case.

Please stock this machine in dry environment away from children.

If you are going to leave this machine unused for a long time, make sure you will provide protect from dust, dirt or moisture.

Trouble shooting guide

Before calling for service, check the following items. If the problem still persists, contact the place of purchase or your nearest authorized dealer.

Problem	Cause	Correction	Reference
Upper thread breaks	1. The machine is not threaded correctly.	1. Rethread the machine.	7
	2. The thread tension is too tight.	2. Reduce the thread tension (lower number).	19
	3. The thread is too thick for the needle.	3. Select a larger needle.	13
	4. The needle is not inserted correctly.	4. Remove and reinsert the needle (flat side towards the back).	11
	5. The thread is wound around the spool holder pin.	5. Remove the reel and wind thread onto reel.	7
	6. The needle is damaged.	6. Replace the needle.	11
Lower thread breaks	1. The bobbin case is not inserted correctly.	1. Use wrong bobbin case cause machine unable to function normally, please use specific bobbin case of this model	-
	2. The bobbin case is threaded wrong.	2. Thread the bottom thread again.	6
Skipped stitches	1. The needle is not inserted correctly.	1. Remove and reinsert needle (flat side towards the back).	11
	2. The needle is damaged.	2. Insert a new needle.	11
	3. The wrong size needle has been used.	3. Choose a needle to suit the thread.	13
	4. The foot is not attached correctly.	4. Check and attach correctly.	11
	5. The machine is not threaded correctly.	5. Rethread the machine.	7
Needle breaks	1. The needle is damaged.	1. Insert a new needle.	11
	2. The needle is not correctly inserted.	2. Insert the needle correctly (flat side towards the back).	11
	3. Wrong needle size for the fabric.	3. Choose a needle to suit the thread and fabric.	13
	4. The wrong foot is attached.	4. Select the correct foot.	-
	5. The needle clamp screw is loose.	5. Use the screwdriver to firmly tighten the screw.	10
	6. The presser foot that is used is not appropriate for the type of stitch that you wish to sew.	6. Attach the presser foot that is appropriate for the type of stitch that you wish to sew.	-
	7. The upper thread tension is too tight.	7. Loosen the upper thread tension.	19
Loose stitches	1. The machine is not correctly threaded.	1. Check the threading.	7
	2. The bobbin case is not correctly threaded.	2. Thread the bobbin case as illustrated.	6
	3. Needle/ fabric/ thread combination is wrong.	3. The needle size must suit the fabric and thread.	13
	4. Thread tension is wrong.	4. Correct the thread tension.	19
Seam gather or pucker	1. The needle is too thick for the fabric.	1. Select a finer needle.	13
	2. The stitch length is adjusted wrong.	2. Readjust the stitch length.	-
	3. The thread tension is too tight.	3. Loosen the thread tension.	19

Problem	Cause	Correction	Reference
Seam puckering	1. The needle thread tension is too tight.	1. Lossen the thread tension.	19
	2. The needle thread is not threaded correctly.	2. Rethread the machine.	7
	3. The needle is too heavy for the fabric being sewn.	3. Choose a needle to suit the thread and fabric.	13
	4. The stitch length is too long for the fabric.	4. Make stitch dense.	-
	5. If you are sewing thin fabric.	5. Sew with stabiliser material under the fabric.	-
Patterns are distorted	1. The correct presser foot is not used.	1. Select the correct foot.	-
	2. The needle thread tension is too tight.	2. Loosen the thread tension .	19
The machine jams	1. Thread is caught in the hook.	Remove the upper thread and bobbin case, turn the handwheel backwards and forwards by hand and remove the thread remands.	6
	2. The feed dogs are packed with lint.		
The machine is noisy	1. Fluff or oil have collected on the hook or needle bar.	1. Clean the hook and feed dog as described.	-
	2. The needle is damaged.	2. Replace the needle.	11
	3. Slight humming sound coming from internal motor.	3. Normal.	-
	4. Thread is caught in the hook.	Remove the upper thread and bobbin case, turn the handwheel backwards and forwards by hand and remove the thread remands.	6
	5. The feed dogs are packed with lint.		
Uneven stitches, uneven feed	1. Poor quality thread.	1. Select a better quality thread.	13
	2. The bobbin case is threaded wrong.	2. Remove the bobbin case, the thread and reinsert correctly.	6
	3. Fabric has been pulled.	3. Do not pull on the fabric while sewing, let it be taken up by the machine.	-
The sewing machine doesn't operate	1. The machine is not turned on.	1. Turn on the machine.	15
	2. The machine is not plugged in.	2. Connect the power line plug to the electric outlet.	4
	3. The presser foot lifter is raised.	3. Lower the presser foot lifter.	12
	4. The bobbin winder spindle is in the right position.	4. Return the bobbin winder spindle to the left position.	5